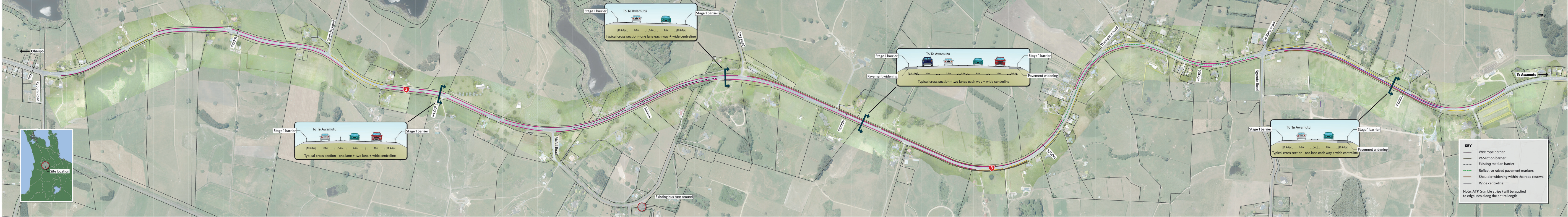


# State Highway 3 Ohaupo to Te Awamutu Safety Improvements - Stage 1



**KEY**

- Wire rope barrier
- W-Section barrier
- Existing median barrier
- Reflective raised pavement markers
- Shoulder widening within the road reserve
- Wide centreline

Note: ATP (rumble strips) will be applied to edgelines along the entire length