

3 Vickers to City Upgrade



September 2015 - Issue 14

Hi and welcome to your update on the SH3 Vickers to City Upgrade. Spring has truly started to make its presence felt which means better weather and more light to do our work.

We know many of you want to know when the work will be finished and you can start enjoying the benefits of the changes we're making. Originally, we expected this would happen in early 2016. This assumed minimal disruptions that could affect our work. Now, we're able to give more certainty with the work we've completed so far and can tell you that we expect the entire project to be completed by the end of May 2016.

This is later than we first thought, and we appreciate this is disappointing. However, there have been a number of difficulties that have delayed us. In particular, the weather was particularly unkind to us over winter with rain seeing river levels at their highest in eight years during May. As a result our ability to get things done was really hindered. We're hoping all of the surprises and disruptions are now behind us and everything will go to plan from hereon in.

We'll be opening sections of the road and bridges as soon as they're complete so you won't have to wait until May to be able to test them out. We'll make sure to keep you updated as things progress.

As always, if you have any questions about the project please call or email us, our contact details are at the bottom of the page.

What's been happening?

You'll have seen a lot of work happening between Devon Street East and Ngaio Street. We've been installing new stormwater pipes and have now commenced pavement construction here - it will start to look like a proper road very soon!

We've finished installing the storm water pipes and water mains at each end of the Waiwhakaiho Bridge and are now constructing pavement there. The hope is to have the bridge ready to open in November. On the Te Henui Bridge, we have completed the new ducts across the bridge and are in the process of installing new power and communication cables through them. Once the new cables are commissioned we can remove the old ones and start constructing pavement there also.

The soil anchor wall we've been working on underneath the Paynters Avenue overbridge has been keeping us busy. It is a complex structure to build as there's not much room to move and Taranaki's volcanic soils make the ground conditions quite tricky.

We're pleased to let you know that the work installing new water mains through the "spaghetti-like" services (power cables etc.) at the Mangorei Road/SH3 intersection is progressing well with the route of the new main now finalised. There is a little more to be done at night so we can finalise all the installations. We'll let you know when we're going to do this work and thank all of the people living nearby for their patience since we started - we're nearly there!



We've almost finished the new Waiwhakaiho Bridge!

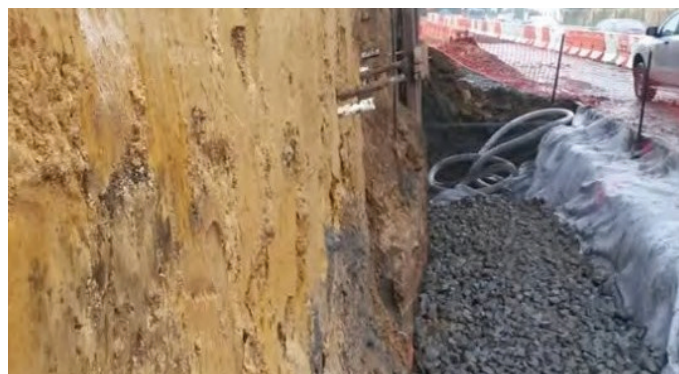


Pulling power cables across the new Te Henui Bridge.

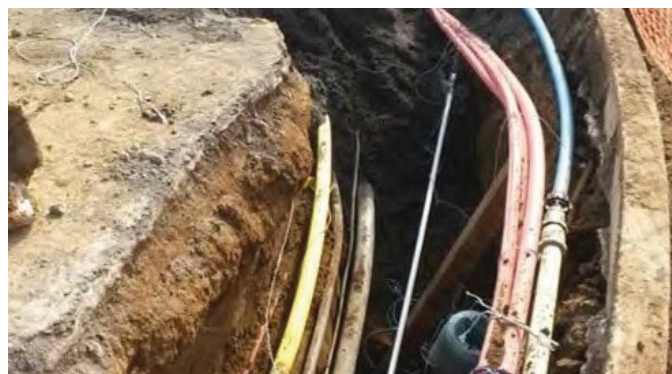
What's coming up?

Over the next couple of weeks we'll be finishing the new retaining wall at the front of the Omahanui Health Care Facility and re-opening the walkway underneath the Waiwhakaiho Bridge.

Between 19 and 23 September we'll be installing power cables under the footpath between Mangorei Road and the new Te Henui Bridge. This is happening on the New Plymouth Girls High School side of the highway. If you use the footpath in this area you'll still be able to walk safely on this side of the road as we'll be creating a temporary path by closing one of the city-bound traffic lanes. As a result of this change, the left hand lane on SH3 from Waiwaka Terrace up to the traffic lights at Mangorei Road will become a left turn only lane.



The soil anchor wall underneath the Paynters Avenue overpass.



Existing service ducts we need to work around.

Did you know?

A lot of work goes into fine tuning where new services (such as power cables and water pipes) can be laid. It is necessary to carefully align the new lines to avoid clashes with the existing ones.

To decide on the location of the new services at the Mangorei Road/SH3 intersection the team have had to dig up the road (a lot by hand to avoid damage to live cables and pipes), locate all of the known and unknown existing services and record their exact positions. To keep the road open while the work is happening, the team work at night. They dig up the road and then fill in the hole so that the road is ready for you to drive on the next morning.

Once the exact positions of all the existing services are known we can finalise the route of the new lines and then it all needs to be dug up again so we can install!

If you have any questions or would like more information on the Vickers to City project please call 0508 V2C INFO (0508 822 4636), send us an email or visit the website.