

Hamilton Southern Links Community Liaison Group meeting

November 2018

Today's Agenda

- Introductions
- Project background
- Project progress
- About Peacocke
- Concept Landscape plan
- Ecological surveys
- Next steps
- Questions



Introductions

- NZ Transport Agency
 - Barry Dowsett
 - Simon Brandon
 - Amanda Hampton
 - Adrian Bathgate
- Hamilton City Council
 - Karen Saunders
 - Nathanael Savage
- Consultants
 - Alastair Black (Gray Matter Ltd)
 - Lyndsey Smith (AECOM)
 - Grant Eccles (Tonkin Taylor)
 - Adrian Morton (Landscape Architect)



Project background

Purpose and benefits

- Joint HCC and NZ Transport Agency Project
- Develop 21km of state highway to provide access for southern Hamilton and support commercial growth south of Hamilton.
- Develop 11km of urban arterials to support planned residential growth in the Peacocke area
- Key benefits:
 - Reduce congestion, improve safety on SH1 and SH3 in the Hillcrest and Melville suburbs of Hamilton
 - Improve freight flows
 - Be a key part of the city's urban arterial network integrated into the HCC Access Hamilton Strategy



Project background – new Government priorities

Focus on safety, access, environment and value for money

- The change of priorities in the Government Policy Statement on Land Transport is reflected in the Transport Agency's 2018-21 NLTP.
- With focus on new priorities there is a reduced emphasis on state highway improvements.
- While Southern Links construction works are not funded we are proceeding with property purchases where required and pre-implementation work such as ecology surveys and reports.

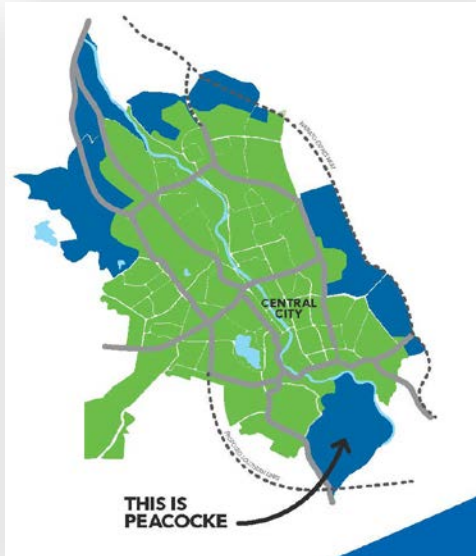


Project progress

- Hamilton City Council has secured \$290.4 million from the Government's Housing Infrastructure Fund. This comprises of \$180.3m of 10-year interest-free loan and \$110.1m of NZTA subsidies for the development of infrastructure into and within Peacocke, including a new bridge over the Waikato River.
- The first of these projects is about to get under way - connecting Wairere Drive and Cobham Drive – followed by a roundabout at SH3/Dixon Road. HCC is planning to get all the infrastructure completed by 2025 and will hold a public open day early next year on the plans for the Peacocke area.
- The Transport Agency is working closely with Council on the Peacocke development, including on Wairere Drive/Cobham Drive and SH3/Dixon Road.
- Both the Transport Agency and Council are continuing to acquire properties within the designation.
- Construction of Southern Links was not included in the 2018-21 National Land Transport Programme (NLTP) which means there is no timeline for construction of the Transport Agency part of the network.

About Peacocke

Karen Saunders, Hamilton City Council



Peacocke brought into city **1989**

\$290.4m Interest Free Housing Infrastructure Fund Loan

Provides **1/3** of Hamilton's housing needs over next 10 years

8400 new homes in the next 30 years

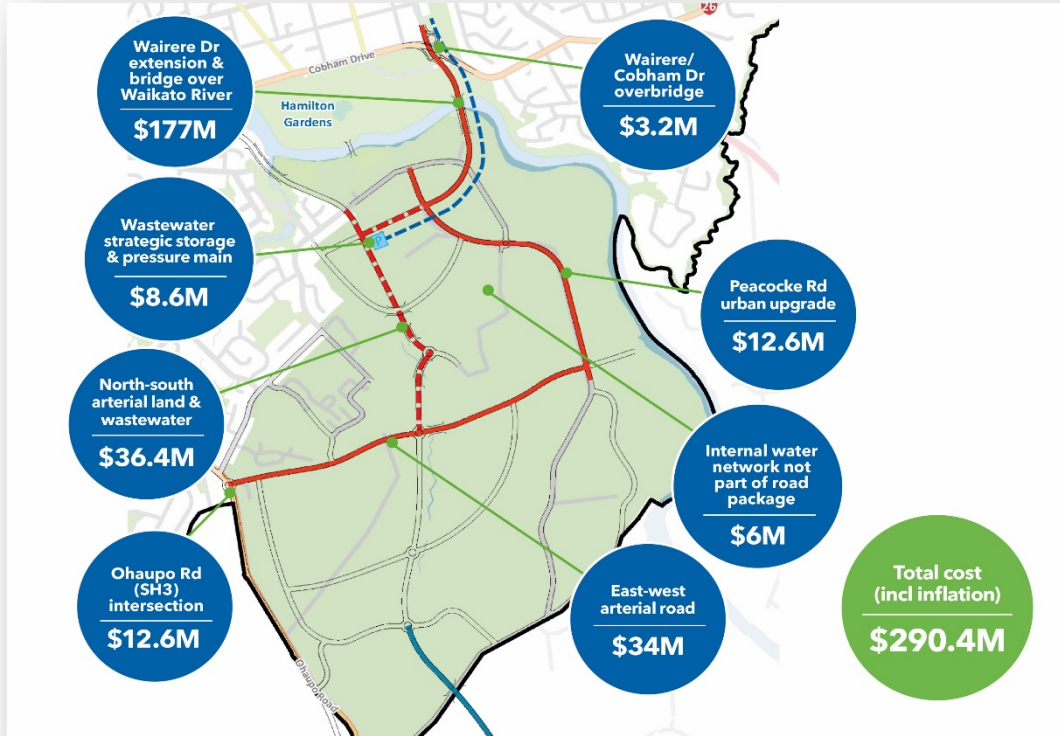
\$6B of Peacocke Development Benefits

Home to Long-tailed bats which weigh **8–14g** and fly up to **60km/hour**

100ha of open space (gullies, riverside esplanade, neighbourhood parks and community & sports parks)

New city bridge, first one **1884** and last one **1994**

Peacocke Key Infrastructure Projects



Other projects:

- District Plan Changes
- Integrated Catchment Management Plan
- Open Space and Parks Land Acquisition & Development
- Ecological Protection & Enhancement
- Private Developer Agreements
- Consents
- Forming Partnerships

Peacocke Concept Landscape Management Plan

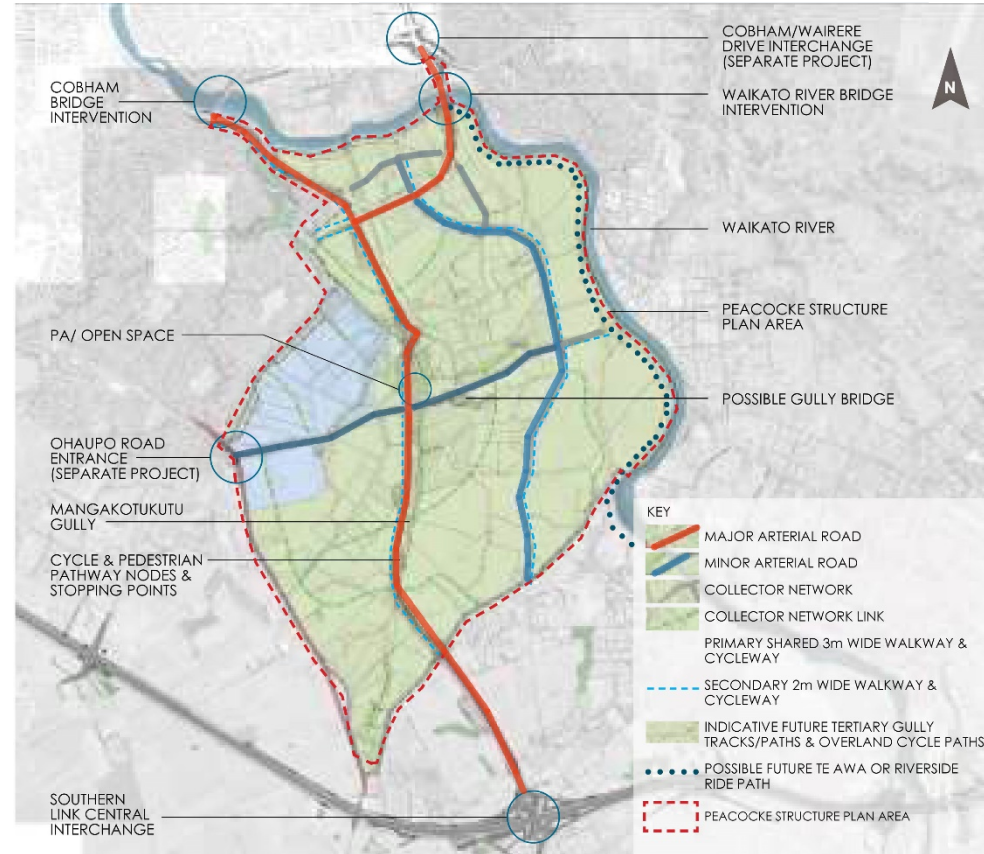
Adrian Morton, Landscape and Urban Design

- Development of a CLMP for the Peacocke infrastructure requirements with the intent of:
 - Providing a consistent and co-ordinated theme and design approach across the Peacocke infrastructure project
 - Utilise the project wide concept for monitoring and management of each stage
 - Provide a reference and design guidelines for designers engaged in the detail design stages of the Peacocke area
 - Ensure detail design, consenting and construction phases maintain the Southern Links objectives and design intent
 - Enable key stakeholders to be engaged during the design phases



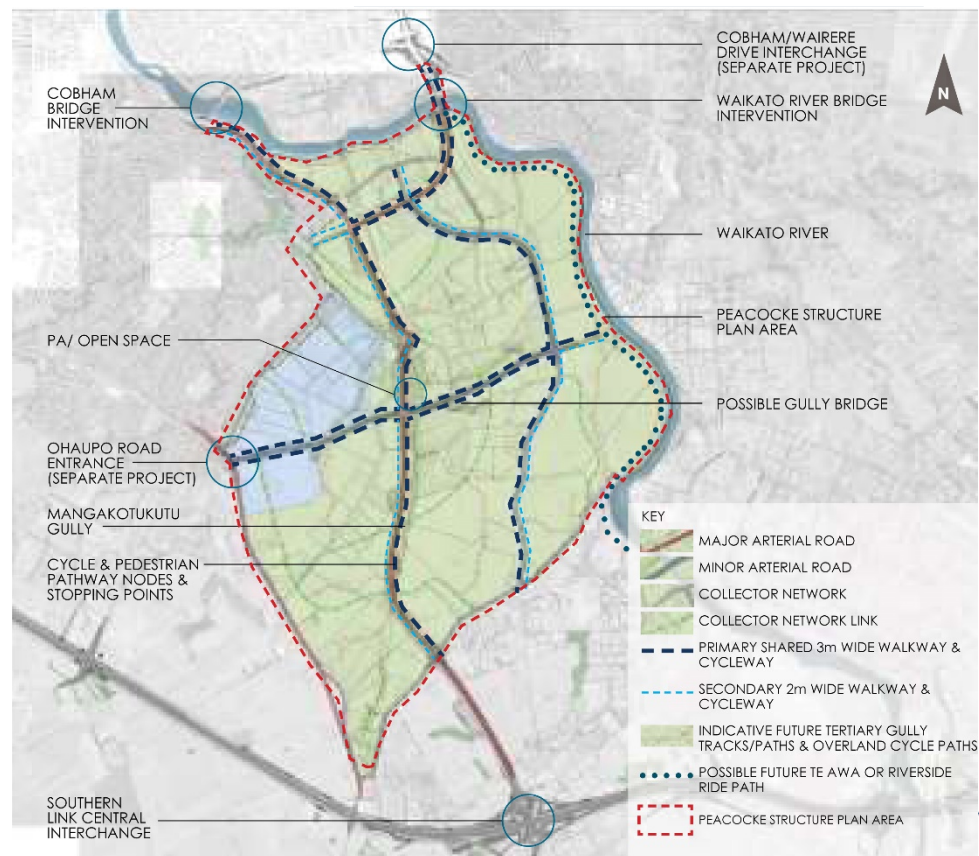
Peacocke Infrastructure Components

- Major Arterial transport corridor (north-south)
- Minor Arterial transport corridor
- Cobham and Wairere Drive Interchange
- Landmark Waikato River bridge
- Mangakotukutuku Gully/Stream Bridge crossings



Peacocke Pedestrian & Cycle Facilities

- Cycle and pedestrian network and facilities
- On and off road cycle facilities
- Shared pedestrian and cycle facilities
- Integration with open space environments and proposed cycle trails
- Informal gully tracks and neighbourhood connection paths



Peacocke Stormwater Management

- Integrated stormwater to manage water
- Treatment swales / rain gardens / wetland pond
- Integration of planting to aid water treatment and provide wildlife habitat



Rain garden



Swale profile sketch



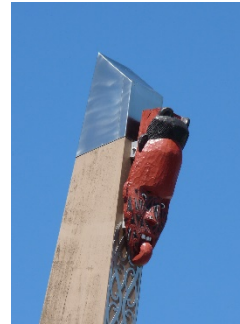
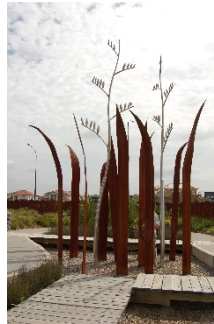
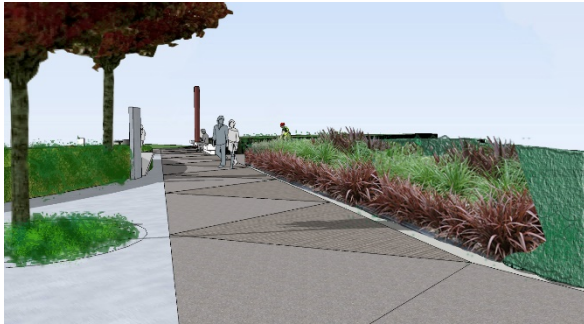
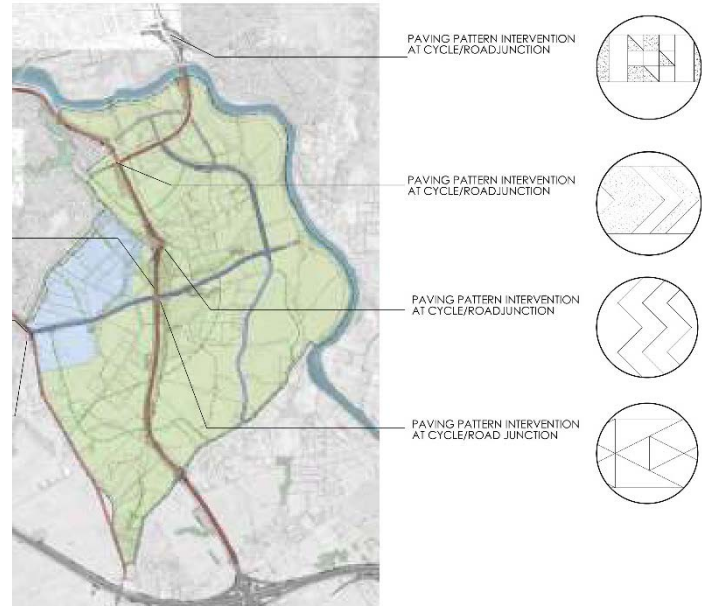
Swale planting



Swale integrated with pedestrian and cycle facilities

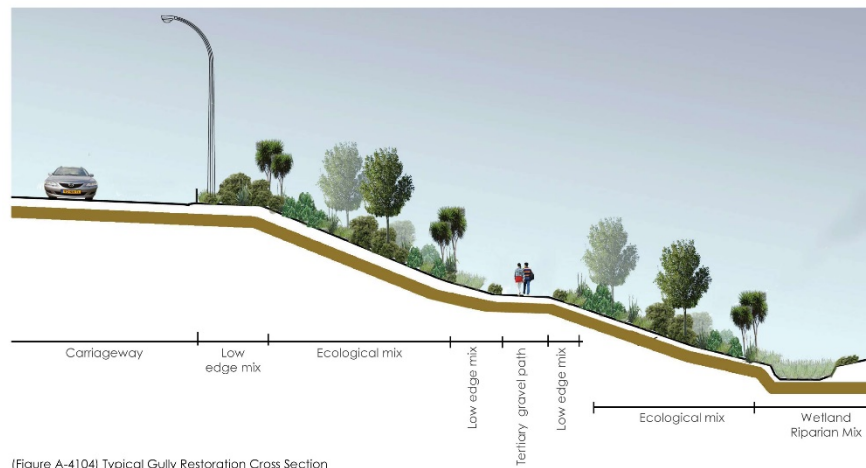
Peacocke Cultural Theme

- Paving patterns at key location
- Cycle and pedestrian stopping nodes
- Retaining wall patterns
- Bridge abutment design
- Path markers / pou
- Plant species for traditional uses
- Interpretation boards relevant to paa and archaeology sites



Peacocke Ecological and Landscape Planting

- Predominantly native planting types to suit road environment, soften structures, provide ecological benefit and maintain visual amenity of area
- Ecological planting to support EMMP objectives
- Wetland and swale planting
- Landscape amenity planting
- Gully planting



(Figure A-4104) Typical Gully Restoration Cross Section



Southern Links ecological surveys

Lyndsey Smith, AECOM

- Over the past year extensive bat monitoring has taken place to identify trees used for roosting and feeding sites.
- Several lizard species have been found, including copper skink.
- Bird counts recorded 37 different species, dominated by introduced birds such as goldfinch and chaffinch.
- Ecology work will continue over the next year, so expect to see AECOM vehicles and staff around the Southern Links area.



Next steps

- We are required to lodge Ecological Monitoring and Management Plans (EMMPs) in 2019.
- Also next year we will be undertaking a South Hamilton planning assessment, looking at the area from the Airport to Peacocke and its connections.
- This includes a mode-neutral transport assessment.
- We will continue to purchase property along the designation where necessary.

Thanks for coming – any questions?

For more information and to sign up for project updates:

- www.nzta.govt.nz/southern-links

Please direct any NZTA Southern Links queries to:

- NZTA Communications, Consultation and Property Liaison Manager:
 - Simon Brandon,
southernlinks@nzta.govt.nz

