

SH1 PORIRUA - LINDEN UPCOMING WORK AND LAYOUT CHANGES

Throughout March and April, the Transmission Gully team will lift and place bridge beams onto the SH1 bridges between Porirua and Linden.

This work will impact on travel through the area at night.

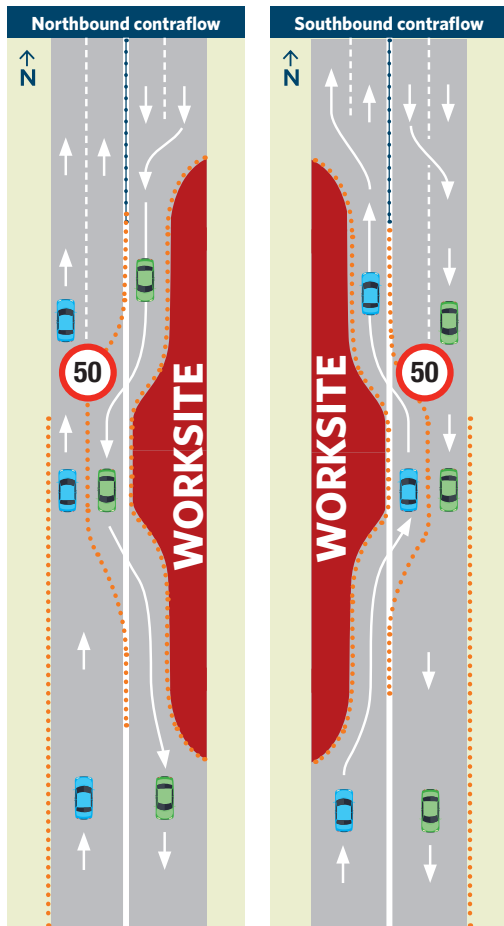
To ensure the safety of road users and staff while we lift the bridge beams, there will be an altered lane layout. We will regularly implement a "contra flow", where we will move all traffic onto one side of the motorway, while the other is free from traffic. This is so that road users are not travelling below bridge beams that are in the process of being secured. During this time, we may also occasionally need to divert one direction of SH1 traffic through Tawa at night.

The diagram of a contra flow shows you what you can expect when this altered layout change is in place.

Once construction commences, the area will start to look a lot different and could be distracting for some drivers. Drive to the conditions and the posted speed limits.

More information including the timeline for the works and traffic management will be available on our Traffic Notices page at www.tg.co.nz. Head to www.journeys.nzta.govt.nz to plan your trip.

Tune into your local radio station or follow [@NZTAWgtn](https://www.facebook.com/NZTAWgtn) on Facebook and Twitter for regular real-time updates.



When works are on the **southbound side**, traffic heading south will merge from two lanes to one before driving through the gap in the median barrier.

When works are on the **northbound side**, traffic heading north will merge from two lanes to one before driving through the gap in the median barrier.