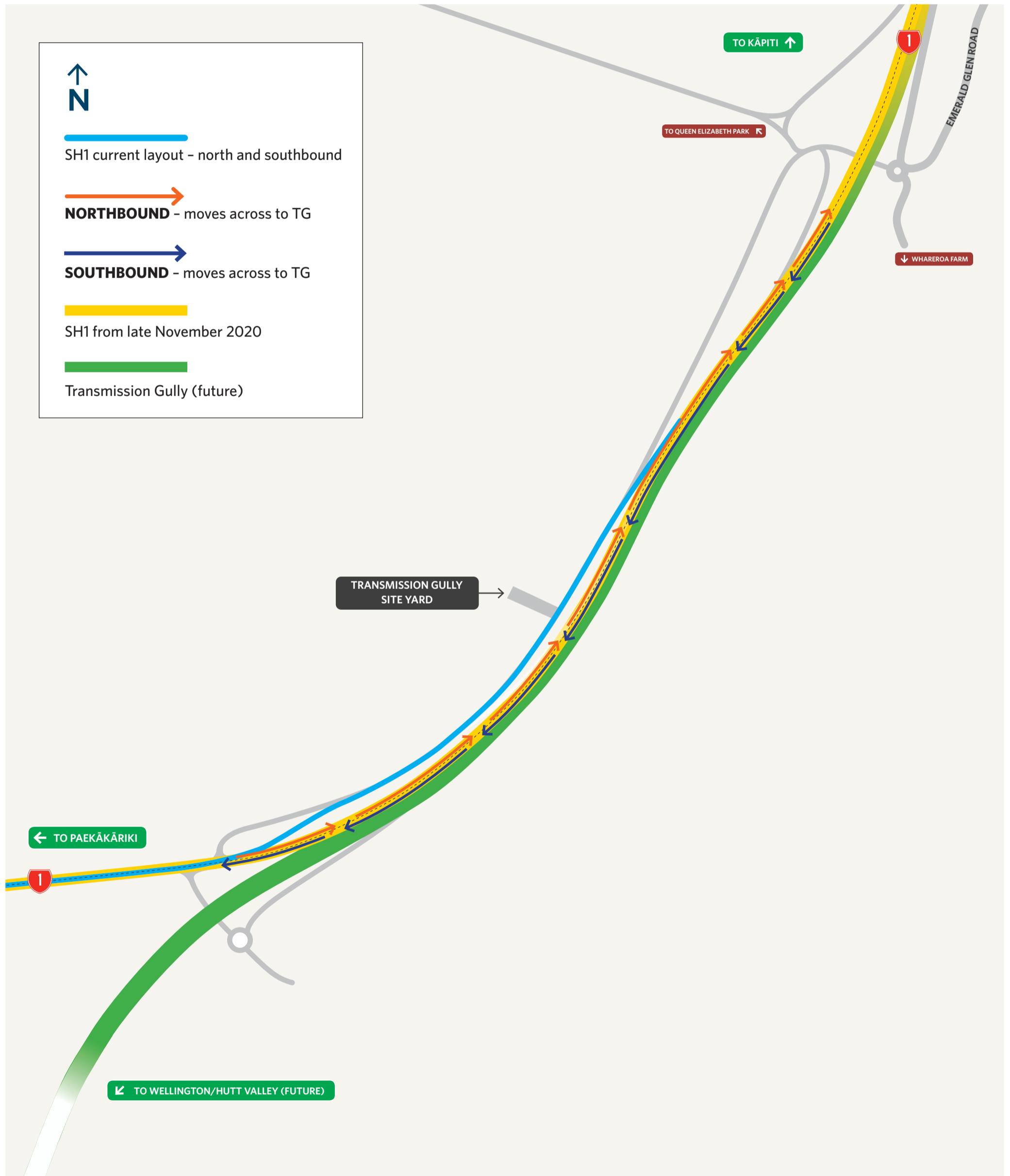


# Upcoming traffic changes Paekākāriki to Mackays

November 2020 to September 2021

To enable completion of the new local connector road and intersections

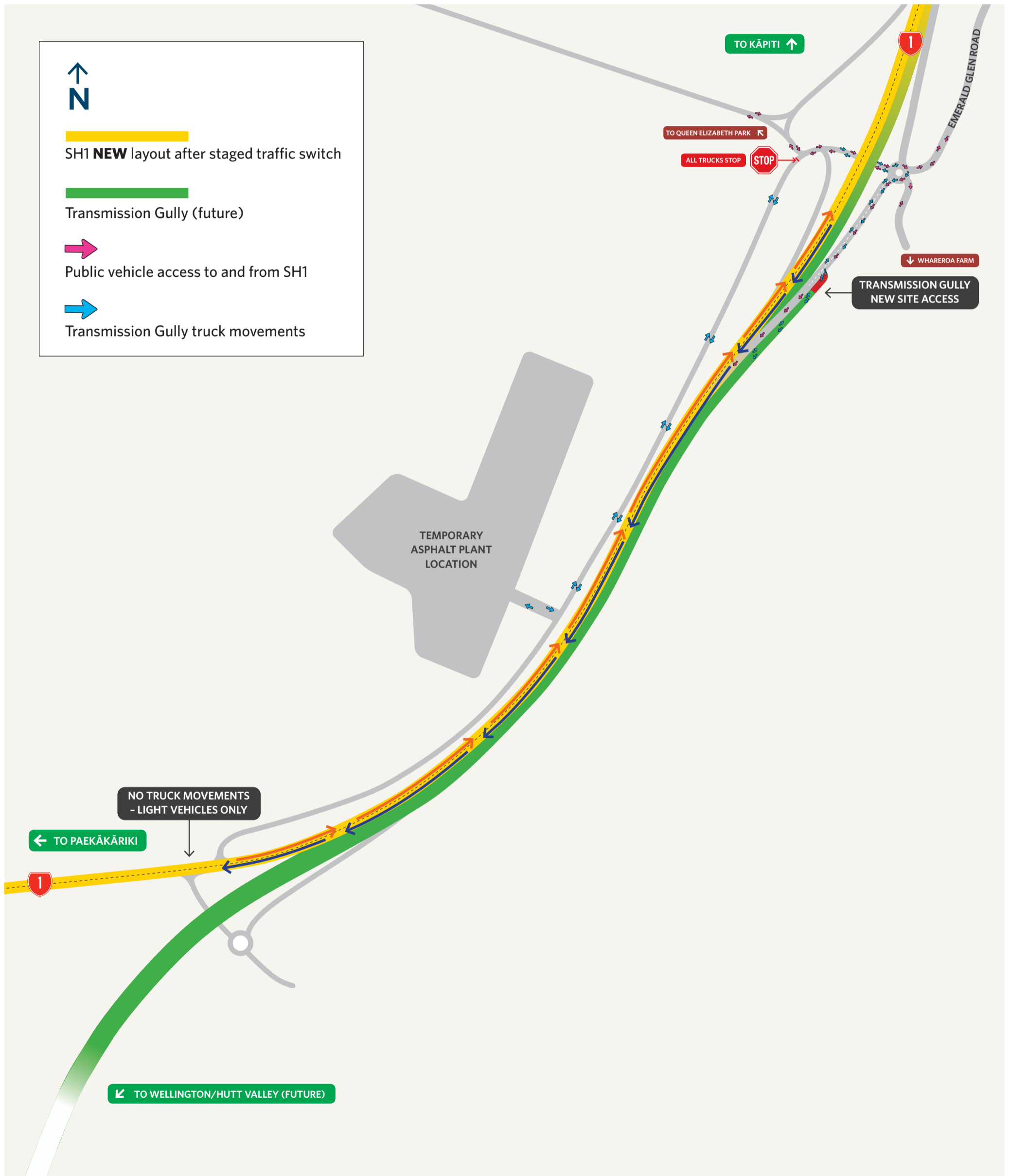


# Site access

## Mackays crossing

November 2020 to September 2021

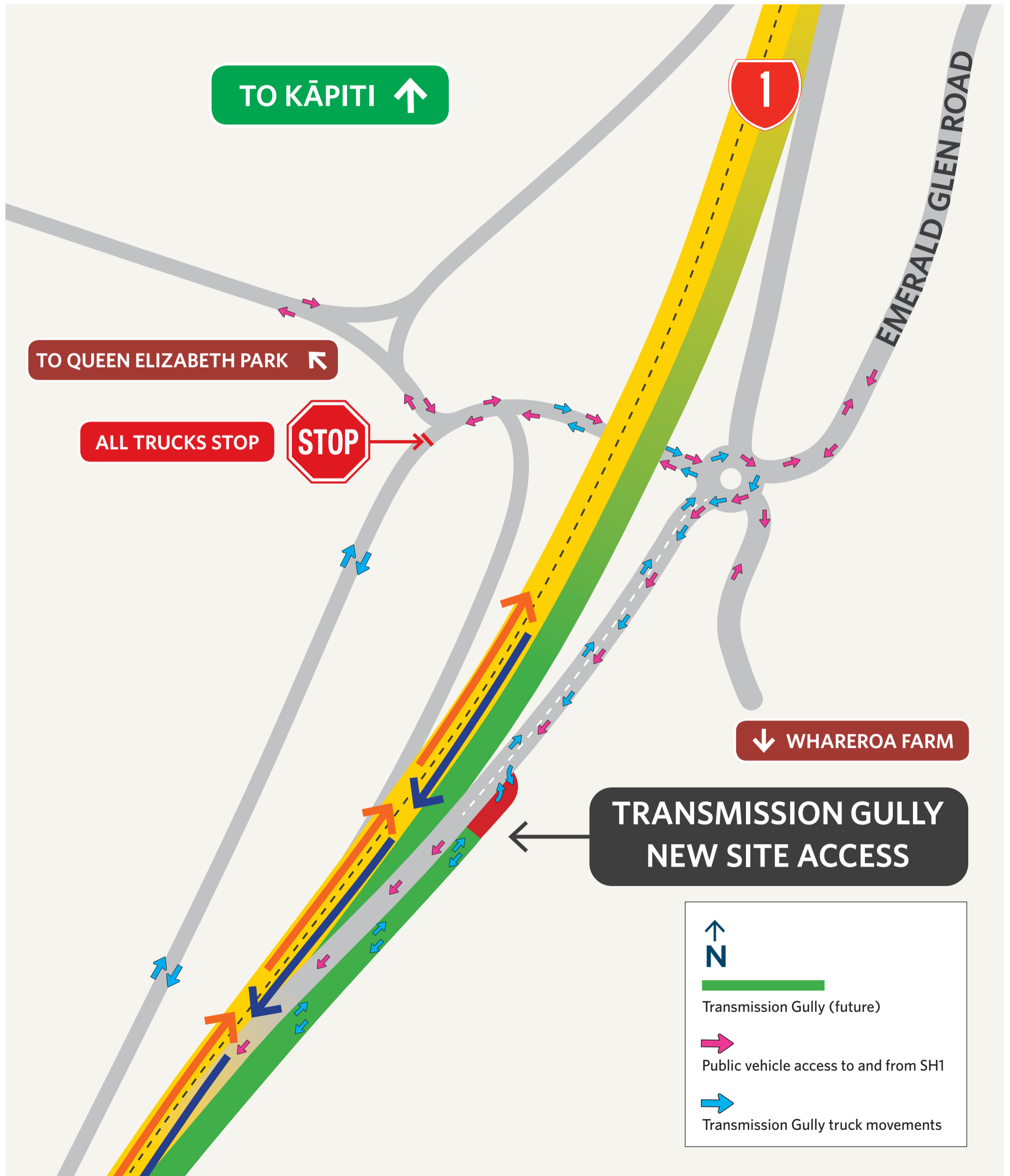
All truck movements into site and to and from temporary asphalt plant



# Site access Mackays crossing

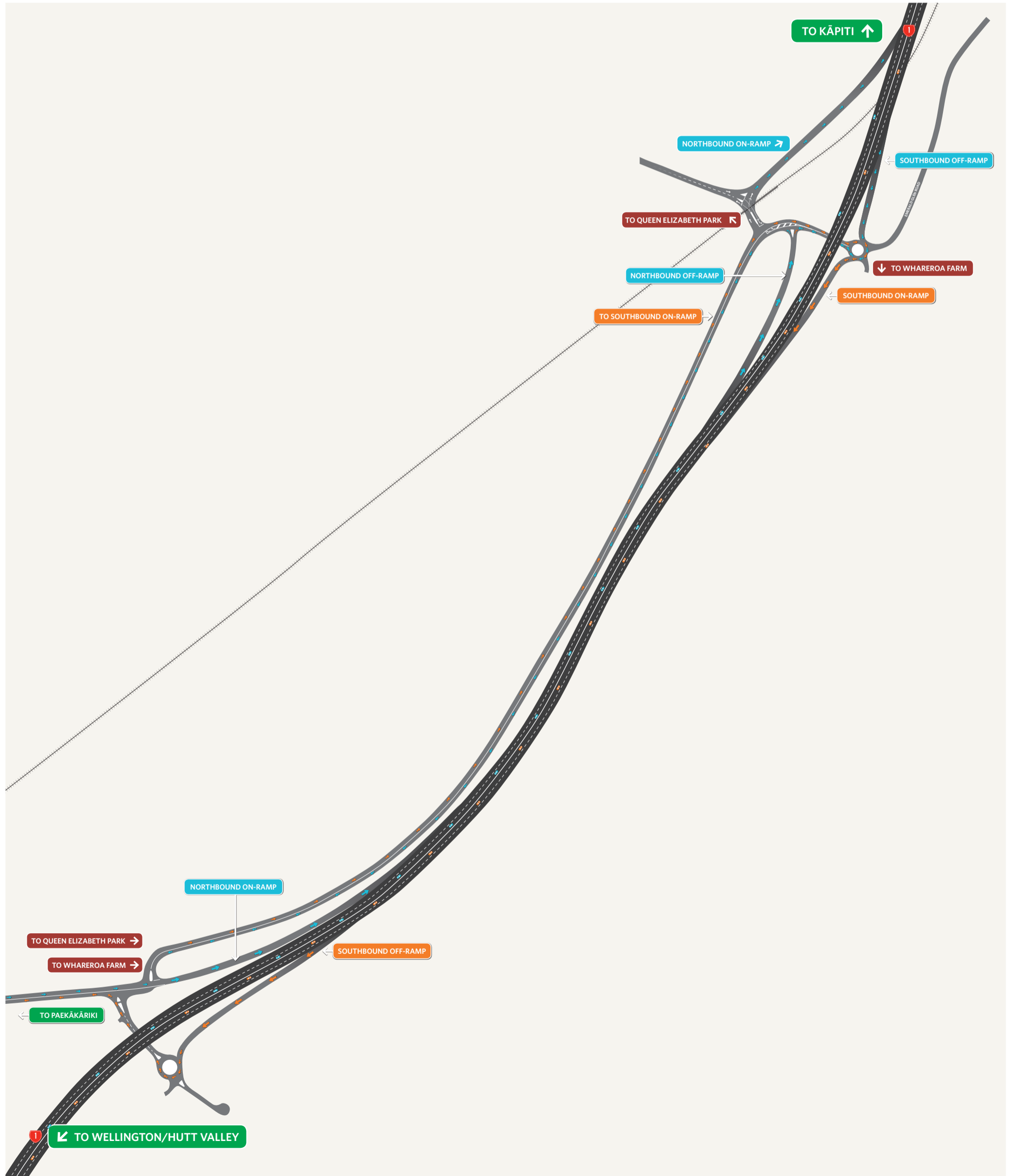
November 2020 to September 2021

All truck movements into site and to and from temporary asphalt plant



# Paekākāriki to Mackays interchange overview

Transmission Gully completed



THIS DIAGRAM IS NOT TO SCALE AND INDICATIVE ONLY