



Waikato Expressway

1 Hamilton Section Key Facts

Value: Between \$600 and \$700 million depending on the final design.

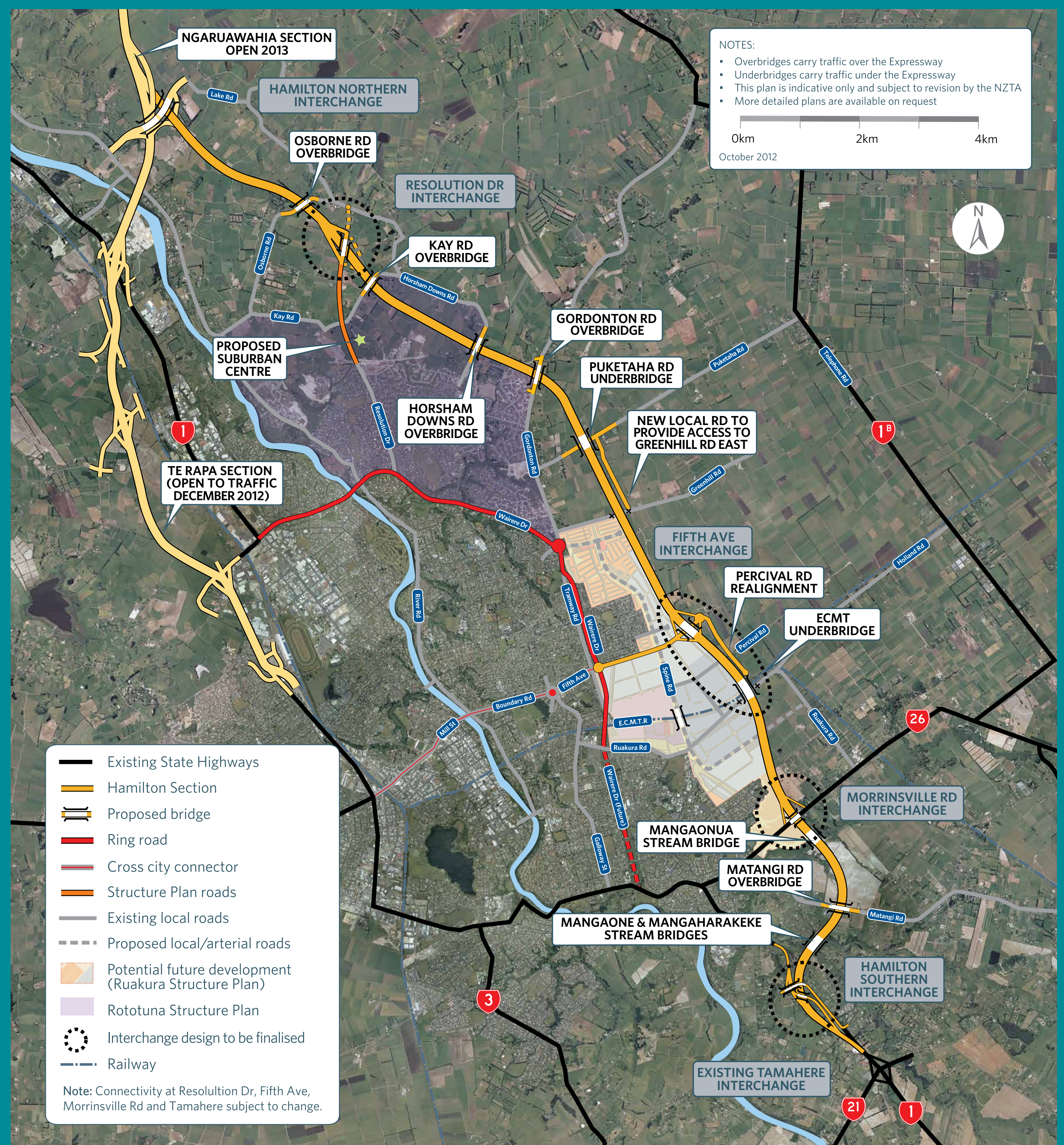
Length: 21.7km, of four lane median divided highway. That's approximately 26,977 steps if you were walking it.

Construction: The Hamilton section is still in the secondary investigation stage. A preliminary design is being developed and any alterations to the road designation are still to be lodged.

The Hamilton section will reduce traffic congestion and improve safety on Hamilton's local road network and surrounding rural network by significantly reducing the volume of through-traffic, including trucks on local roads and streets.

Timeline: The final project scope is expected to be confirmed by April 2013. Alterations to the designation and resource consents will be applied for with the aim of starting construction in 2015 and opening to traffic in 2019.

Safe System: Safer Journeys New Zealand's Road Safety Strategy 2010-20 has a vision of a safe road system increasingly free of deaths and serious injuries. The Waikato Expressway has adopted a safe system approach to highway development on all sections of the Waikato Expressway. We recognise that people are vulnerable and do make mistakes and we're looking at how the Expressway is designed to ensure we build more forgiving roads and roadsides for motorists.



Confluence of the Mangaone and Mangaharakeke gullies

Interchanges

Interchanges for the section are still being finalised but are proposed at Lake Road, connecting to the Ngaruawahia section, Resolution Drive, Fifth Avenue, Morrinsville Road (SH26) and Tamahere. The Fifth Avenue interchange would provide the main connection to the city from the eastern side of Hamilton. It would connect directly to the city's Ring Road and the cross city connector on Boundary Road.

Bridges

The number and style of bridge are still to be confirmed but the section will include three large bridges crossing the Mangaone, Mangaharakeke and Mangaonua Stream gullies.

The Mangaonua crossing will be about 160m long. The Mangaone and Mangaharakeke would be about 230m long.

