

Traffic Control Devices Manual Part 8

Code of practice for temporary traffic management (CoPTTM)

manual number: SP/M/010

Section I-3 Events

© NZ Transport Agency

www.nzta.govt.nz

Fourth edition, Amendment 3 of
Code of practice for temporary traffic management

Date of issue: 1 March 2016

Effective date: 1 March 2016

ISBN 978-0-478-40772-3 (print)

ISBN 978-0-478-40773-0 (online)

Copyright information

This publication is copyright © NZ Transport Agency. Material in it may be reproduced for personal or in-house use without formal permission or charge, provided suitable acknowledgement is made to this publication and the NZ Transport Agency (NZTA) as the source. Requests and enquiries about the reproduction of material in this publication for any other purpose should be made to:
NZ Transport Agency
Private Bag 6995
Wellington 6141

The permission to reproduce material in this publication does not extend to any material for which the copyright is identified as being held by a third party. Authorisation to reproduce material belonging to a third party must be obtained from the copyright holder(s) concerned.

Disclaimer

The NZTA has endeavoured to ensure material in this document is technically accurate and reflects legal requirements. However, the document does not override governing legislation. The NZTA and its employees and agents involved in the preparation and publication of this document do not accept liability for any consequences arising from the use of this document. Users of this document should apply and rely upon their own skill and judgment, and should not rely on the manual's contents in isolation from other sources of advice and information. In applying their own skill and judgment, the standards of safety and serviceability explicitly required or implied by this manual shall not be reduced. If the user is unsure whether the material is correct, they should make direct reference to the relevant legislation or regulations and contact the NZTA.

More information

Published 2013

ISBN 978-0-478-40772-3 (print)

ISBN 978-0-478-40773-0 (online)

EVENTS DIAGRAMS LIST

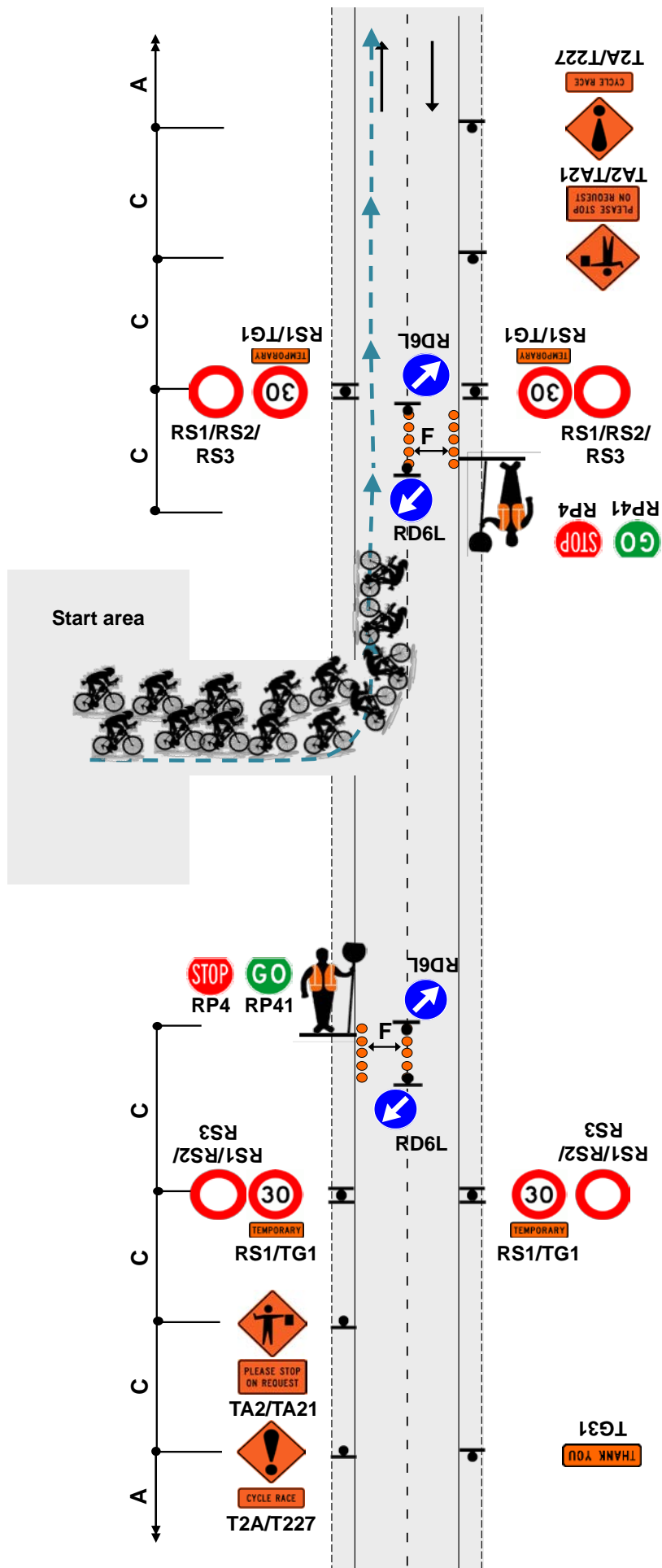
No.	LEVEL 1 TWO-WAY TWO-LANE ROADS	
I3.1	Start area (off the carriageway)	Manual traffic control
I3.2	Finish area (off the carriageway)	Manual traffic control
I3.3	Event travelling along the route / intersecting side road	
I3.4	Right hand turn at intersection	Manual traffic control
I3.5	Left hand turn at intersection	Manual traffic control
I3.6	Left hand turn at intersection	Within a 1m coned chute
I3.7	Left turn at roundabout	Manual traffic control
I3.8	Turnaround point	Manual traffic control

TWO-WAY TWO-LANE ROAD
Start area (off the carriageway)
Manual traffic control

13.1
 Level 1

Notes

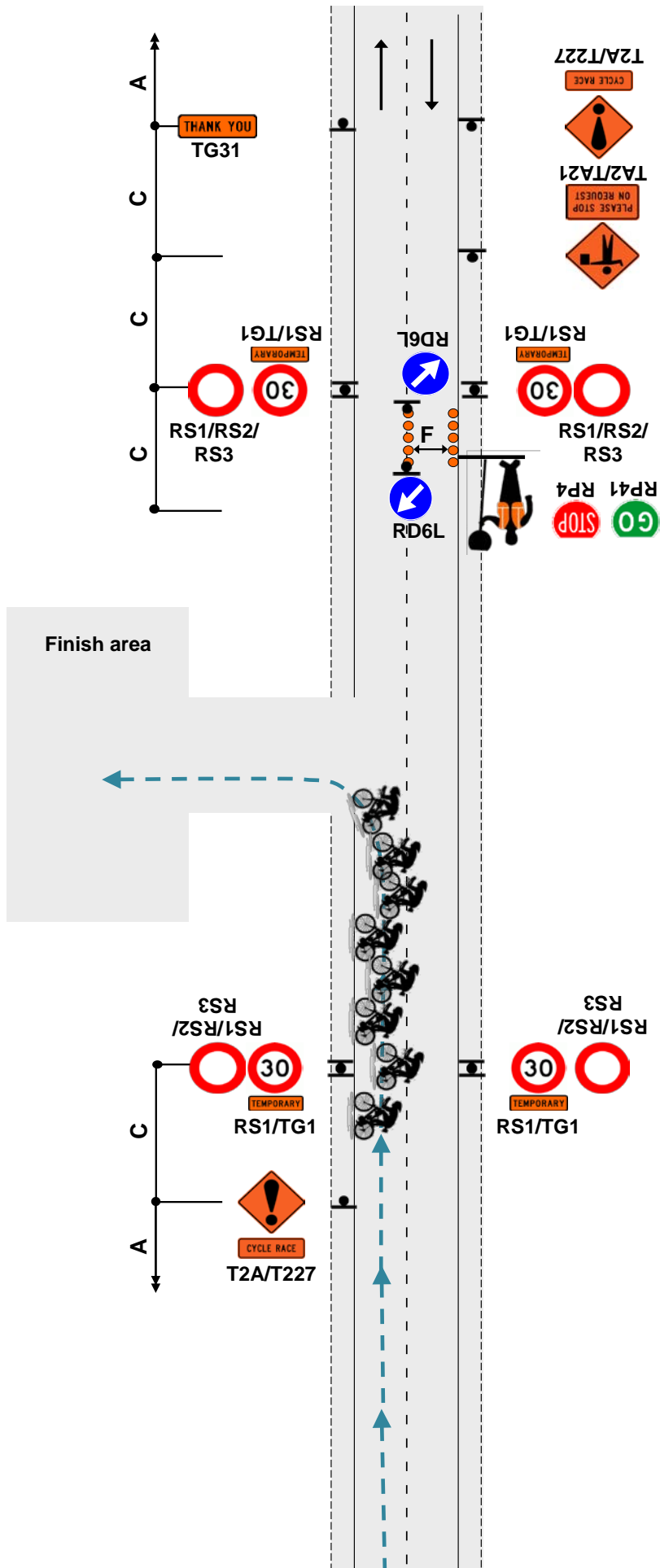
1. MTC with RP4/RP41 STOP/GO or RP4/RP42 STOP/SLOW paddle on road shoulder located between 1st and 2nd cone
2. Minimum 5 cones in cone threshold at:
 - 2.5m centres - less than 65km/h
 - 5m centres - more than 65km/h
3. Both MTC to stop traffic as cyclists are released from the start area
4. The MTC controlling the right hand lane may not be required if event participants will not be crossing the centre line
5. Refer to C10.2.3 MTC essentials for further information
6. TSL and speed reinstatement to be gated if AADT over 500vpd
7. This TMD must be used in conjunction with appropriate T2A/B advance warning and TG31 Thank you notification for the event route



TWO-WAY TWO-LANE ROAD
Finish area (off the carriageway)
Manual traffic control

Notes

1. MTC with RP4/RP41 STOP/GO or RP4/RP42 STOP/SLOW paddle on road shoulder located between 1st and 2nd cone
2. Minimum 5 cones in cone threshold at:
 - 2.5m centres - less than 65km/h
 - 5m centres - more than 65km/h
3. MTC to stop traffic as bunches of cyclists approach the finish area
4. Refer to C10.2.3 MTC essentials for further information
5. TSL and speed reinstatement to be gated if AADT over 500vpd
6. This TMD must be used in conjunction with appropriate T2A/B advance warning and TG31 Thank you notification for the event route



TWO-WAY TWO-LANE ROAD

Event travelling along the route / intersecting side road

Notes

Advance warning from rear

1. Advance warning provided by either:

- Static mounted T2A/B and appropriate supplementary plate (CYCLE RACE, RUNNERS, WALKERS)

OR

- Tail pilot vehicle with appropriate rear mounted supplementary plate (CYCLISTS AHEAD, RUNNERS AHEAD, WALKERS AHEAD)

Note: Where cars or light utilities are used for sports events and inspections, only the appropriate supplementary sign is required

Shadow vehicles (optional)

- Optional to use shadow vehicle to protect cyclists/ runners/ walkers (normally the main bunch)
- Each shadow vehicle has a PASS WITH CARE plate but no RD6 arrow

Advance warning from opposite direction

- Recommended for narrow and winding roads
- Advance warning is provided by either:

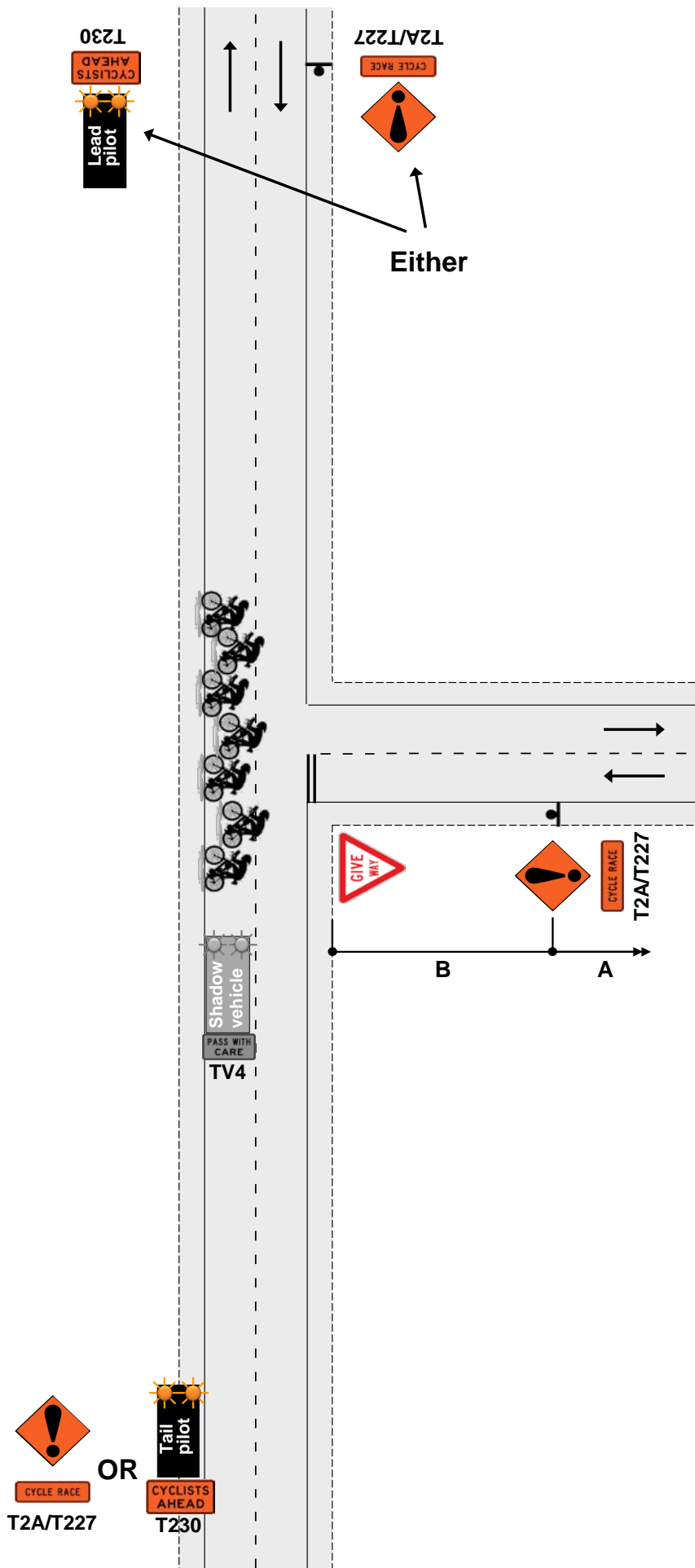
- Static mounted T2A/B and appropriate supplementary plate

OR

- Lead pilot vehicle with appropriate front mounted supplementary plate (CYCLISTS AHEAD, RUNNERS AHEAD, WALKERS AHEAD)

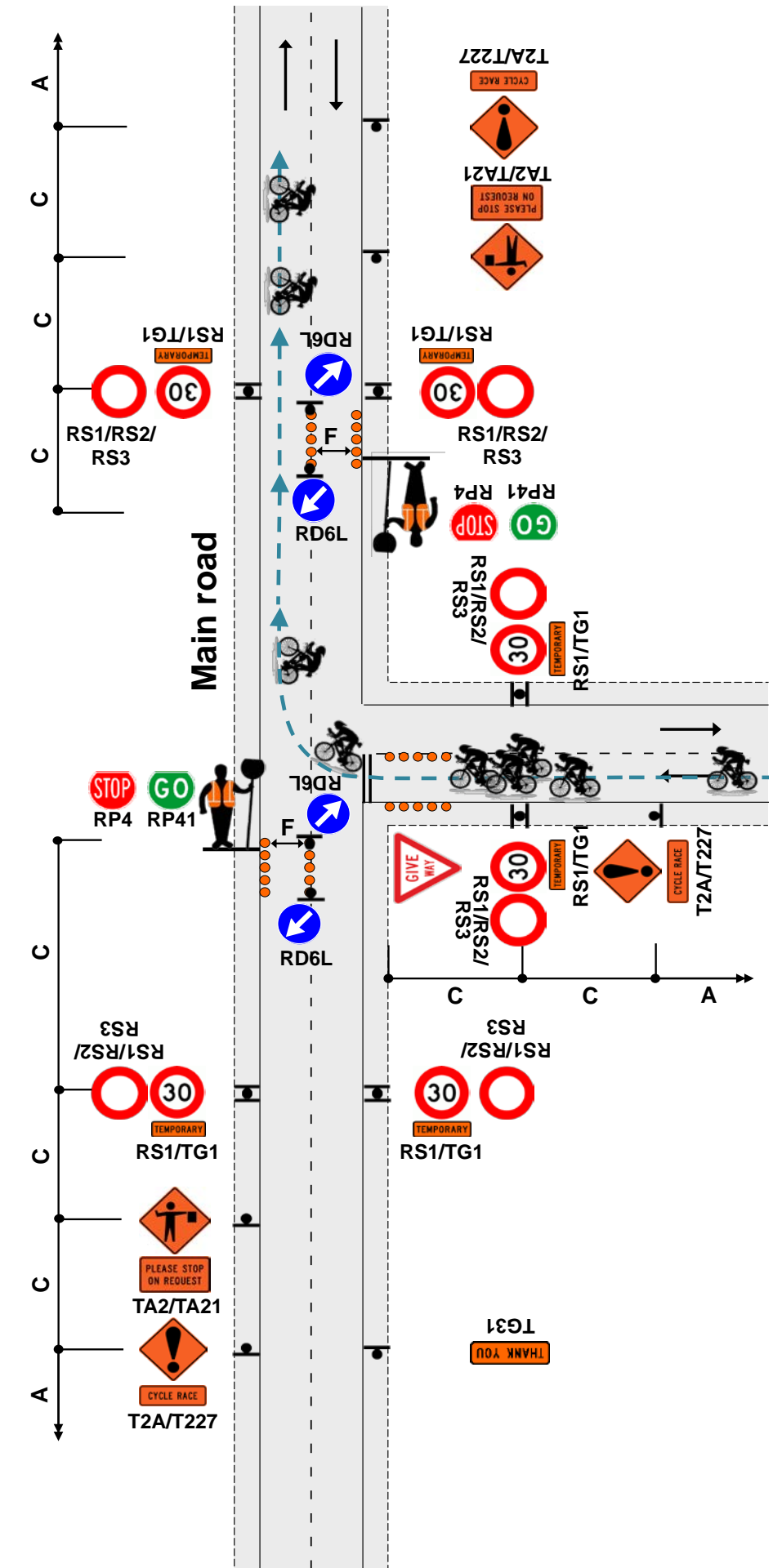
Intersecting roads

6. T2A and appropriate supplement plate to be placed on intersecting roads



TWO-WAY TWO-LANE ROAD
Right hand turn at intersection
Manual traffic control

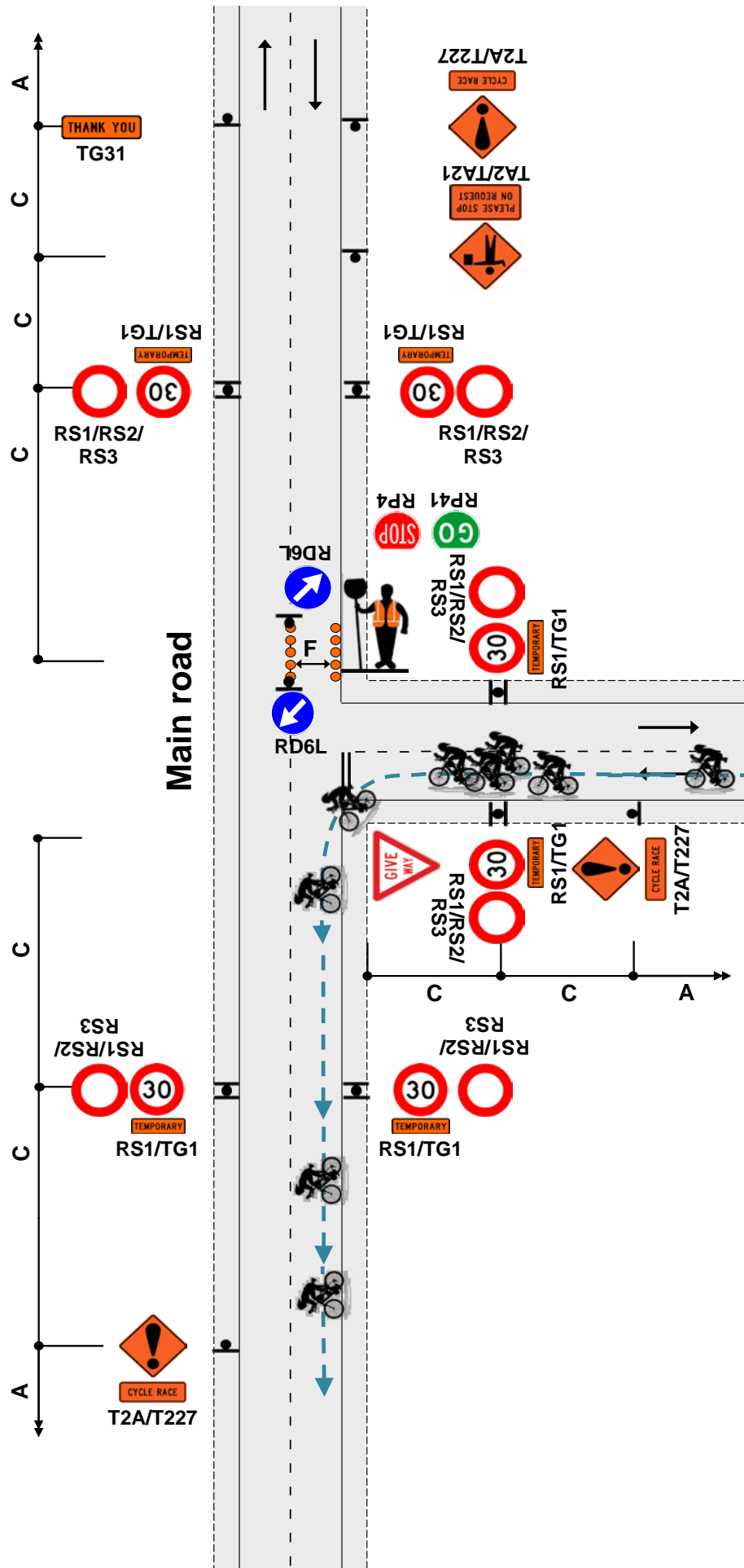
- Notes**
1. MTC with RP4/RP41 STOP/GO or RP4/RP42 STOP/SLOW paddle on road shoulder located between 1st and 2nd cone
 2. Minimum 5 cones in cone threshold at:
 - 2.5m centres - less than 65km/h
 - 5m centres - more than 65km/h
 3. Both MTC to stop traffic on the main road on the approach of cyclists on the side road
 4. Refer to C10.2.3 MTC essentials for further information
 5. TSL and speed reinstatement to be gated if AADT over 500vpd
 6. This TMD must be used in conjunction with appropriate T2A/B advance warning and TG31 Thank you notification for the event route



TWO-WAY TWO-LANE ROAD
Left hand turn at intersection
Manual traffic control

Notes

1. MTC with RP4/RP41 STOP/GO or RP4/RP42 STOP/SLOW paddle on road shoulder located between 1st and 2nd cone
2. Minimum 5 cones in cone threshold at:
 - 2.5m centres - less than 65km/h
 - 5m centres - more than 65km/h
3. MTC to stop traffic on the main road on the approach of cyclists on the side road
4. Refer to C10.2.3 MTC essentials for further information
5. TSL and speed reinstatement to be gated if AADT over 500vpd
6. This TMD must be used in conjunction with appropriate T2A/B advance warning and TG31 Thank you notification for the event route



TWO-WAY TWO-LANE ROAD
Turnaround point
Manual traffic control

Notes

1. MTC with RP4/RP41 STOP/GO or RP4/RP42 STOP/SLOW paddle on road shoulder located between 1st and 2nd cone
2. Minimum 5 cones in cone threshold at:
 - 2.5m centres - less than 65km/h
 - 5m centres - more than 65km/h
3. MTC to stop traffic on the approach of cyclists to the turnaround point
4. Refer to C10.2.3 MTC essentials for further information
5. TSL and speed reinstatement to be gated if AADT over 500vpd
6. This TMD must be used in conjunction with appropriate T2A/B advance warning and TG31 Thank you notification for the event route

