

SECTION E LEVEL LV ROADS SIGNS AND LAYOUT DIAGRAMS

LEVEL LV

- E1.1 TWO-WAY TWO-LANE LEVEL LV ROAD (*Less than 500 vpd*): One Lane Closure
- E1.2 TWO-WAY TWO-LANE LEVEL LV ROAD (*Less than 500 vpd*): Mobile Operation

Permanent Speed Limit		≤50 km/h	60 km/h	70 km/h	80 km/h	100 km/h
		m	m	m	m	m
Traffic Signs						
A	Sign Visibility Distance	50	60	70	80	100
B	Warning Distance	75	90	105	120	150
C	Sign Spacing	35	45	50	60	75
Safety Zones						
D	Longitudinal	0	0	0	0	0
E	Lateral *	1	1	1	1	1
Taper						
G	Length **	25	30	35	40	50
Delineation Devices						
Spacing in Taper		5.0	5.0	5.0	5.0	5.0
Spacing (Around the Working Area)		10.0	10.0	20.0	20.0	20.0

Table C2.1: Layout Distances for Level LV Traffic Management

- * A full width Lateral Safety Zone should be provided but this may sometimes be impractical because of road environment restrictions. In these situations the Lateral Safety Zone width may be reduced and, in some cases, a Lateral Safety Zone will not be able to be provided.
- ** The taper length represents a single lane shift or, on roads without a marked centreline, a shift of half the carriageway width. *The taper length, in metres, is numerically equal to half the Posted Speed Limit, in metres per second.* A 25m long taper may be used at all permanent speed limits to divert vehicles past a work site controlled by either Manual Traffic Controllers (MTC's) or portable traffic signals, provided a 30 km/h temporary speed limit has been applied.

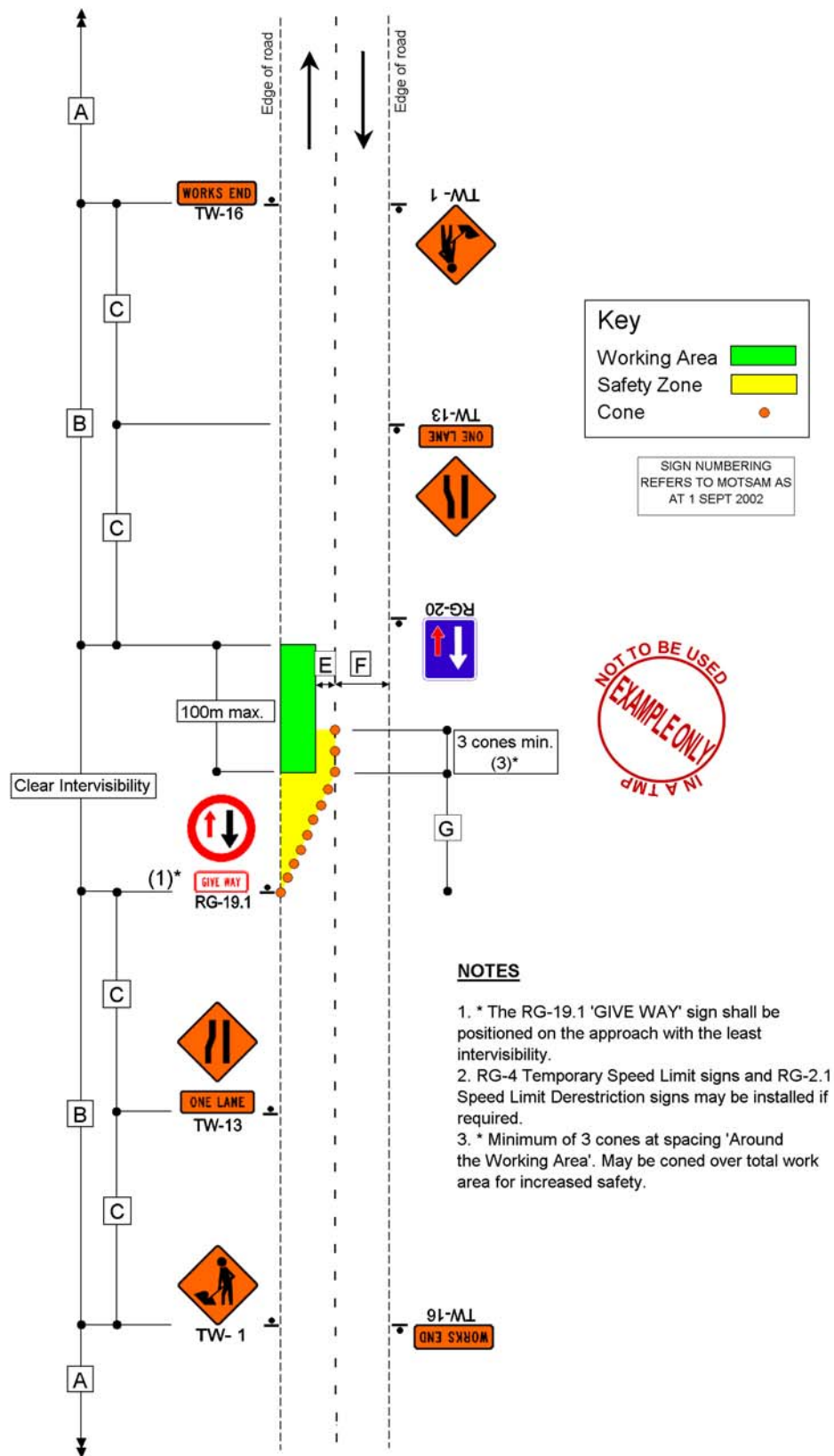
Except for delineation device spacing, which is a maximum distance, the distances specified in the above table are minimum distances.

Minimum Lane Widths

Permanent/Temporary Speed		30 km/h	50 km/h	60 km/h	70 km/h	80 km/h	100 km/h
F	Minimum Lane Width	2.75 m	3.00 m	3.00 m	3.25 m	3.25 m	3.50 m

Table C2.5: Minimum Lane Widths

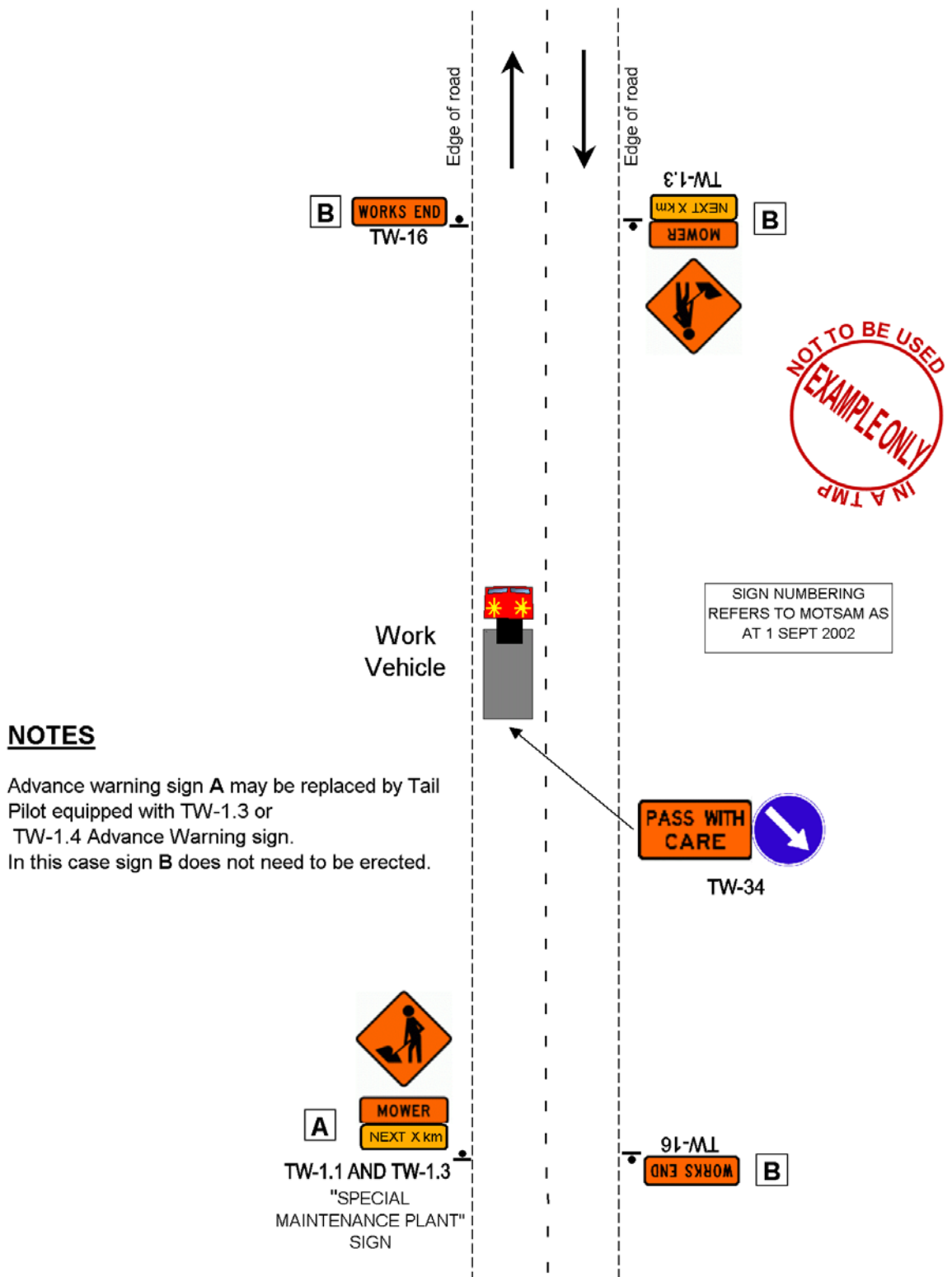
Where the traffic flow contains a high proportion of heavy vehicles wider lanes may be required for efficient traffic operation. Lane widths should, however, never be greater than 4m.



**E1.1: TWO-WAY TWO-LANE LEVEL LV ROAD (Less than 500 vpd)
One Lane Closure**

For additional protection RG-4 Temporary Speed Limit signs and RG-2.1 Speed Limit Derestriction signs may be installed, if necessary.

Manual Traffic Control by Manual Traffic Controller(s) using TW-33 (Stop/Go) sign(s), may be used with this layout. 30 km/h RG-4 signs and advance warning TW15.1 (Flagman) signs must be installed and RG-2.1 signs erected at the point where the temporary speed restriction ends.



**E1.2: TWO-WAY TWO-LANE LEVEL LV ROAD (Less than 500 vpd)
Mobile Operation**