



## Traffic Volumes Monthly Report October 2009

This report has been prepared for the benefit of the NZ Transport Agency (NZTA). No liability is accepted by this company or any employee or sub-consultant of this company with respect to its use by any other person.

This disclaimer shall apply notwithstanding that the report may be made available to other persons for an application for permission or approval or to fulfil a legal requirement.

#### Quality Assurance Statement

Project Manager: Neil Beckett

Prepared by: Gerald Wen

Reviewed by: Neil Beckett

Approved for issue by: Neil Beckett

#### Revision Schedule

Rev. No	Date	Description	Prepared by	Reviewed by	Approved by
1	5/11/2009	First draft	Gerald Wen	Neil Beckett	Neil Beckett

# Overview

---

## Summary

The purpose of this document is to report on the monthly traffic volume changes. This report also covers annual traffic trends for the period of 1989 to 2008.

The overall annual trend in traffic growth, up to 2007, has continued to increase. There has been a reduction observed in 2008.

In October 2009, compared with October 2008, the monthly average daily traffic (MADT) for all vehicles has increased by 1.6 percent; while the MADT for heavy vehicles has reduced by 4.1 percent.

---

**In this report** This report contains the following topics.

Topic	See Page
Overview	1
Technical Notes	2
Key Results	3
Results: All Vehicles	5
Results: Heavy Vehicles	6
Appendix	

---

# Technical Notes

---

**What is MADT and AADT**

Monthly Average Daily Traffic (MADT) is the average of daily traffic volume measured in a given month.

A more commonly reported statistic term is Annual Average Daily Traffic (AADT), which measures the average of daily traffic volume over a given year.

---

**Purpose**

Monthly Average Daily Traffic (MADT) reporting enables us to provide a month-by-month indication of traffic trends, and to allow the effects of specific events (e.g. storms, fuel price shifts, economy, etc.) to be monitored.

---

**Sample coverage**

There are 87 telemetry<sup>1</sup> sites in use on the state highway network to provide this traffic data.

The table below shows the number of sites in each NZ Transport Agency region. These numbers represent the sample sizes that are used to report the regional MADT results.

<b>NZ Transport Agency Region</b>	<b>Number of Telemetry Sites</b>
Northland and Auckland	18
Waikato and Bay of Plenty	19
Taranaki, Manawatu-Wanganui, Hawkes Bay and Gisborne	15
Wellington, Nelson, Marlborough and Tasman	13
Canterbury and West Coast	11
Otago and Southland	11

---

**Sources of variation in MADT**

The number of weekends in a specific month can affect the MADT comparison between years. Also, public holidays that can occur in different months can also affect the ability for direct comparison between years. This report does not attempt to compensate for these variations.

---

---

<sup>1</sup> Telemetry sites are continuously monitored 24/7.

# Key Results

The annual national State Highway Traffic Index <sup>1</sup> measures the rate of traffic growth since 1989.

## Overall

Since 1989, traffic has generally grown across the network. From 1999, the index for heavy vehicles starts to increase at a higher rate than the index for all vehicles. In 2006 there was a minor reduction in cars and light vehicles whilst the number of heavy vehicles showed negligible growth followed by both indexes reaching a peak in 2007.

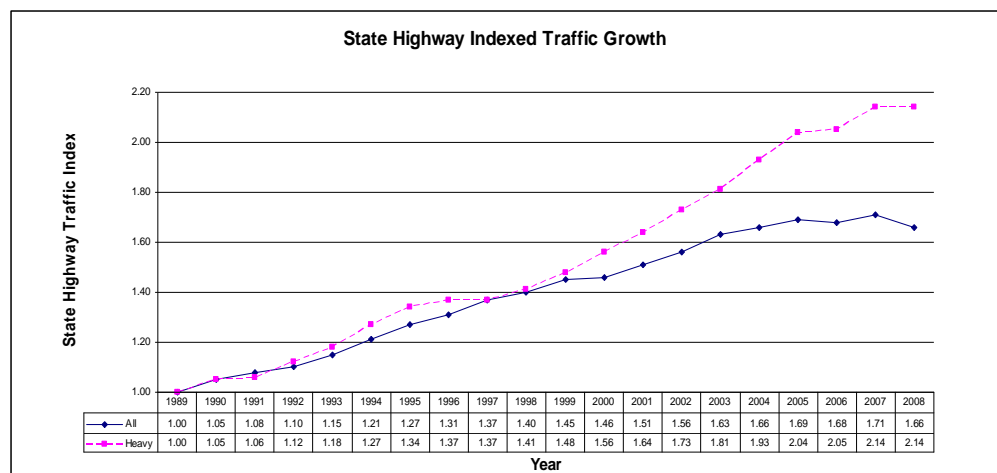
## 2008 All Vehicles

In 2008, the all vehicle index returned to similar levels to those observed in 2005 and 2006.

## 2008 Heavy Vehicles

In 2008, the heavy vehicle index remained at the same level as observed in the previous year.

## National growth (annual)



<sup>1</sup> Weighted average traffic across the 87 telemetry sites

---

**Results:  
Monthly  
traffic at key  
sites**

Five key sites have been selected to represent five main centres in NZ.

The MADT values for October 2009, October 2008 and percentage of difference compared are reported in the table below.

Note the MADT values include all vehicles.

Site	City	MADT (All Vehicles) Oct-08	MADT (All Vehicles) Oct-09	% Change
Auckland harbour bridge (SH1)	Auckland	154820	161861	5%
Karapiro (SH1)	Hamilton	14731	14869	1%
Ngauranga Interchange (SH 1 and SH 2, SB only )	Wellington	43624	44464	2%
DUNSANDEL (Best Alternative)	Christchurch	10292	10232	-1%
Burnside (SH1)	Dunedin	25982	26174	1%

In October 2009, the MADT values for Auckland increased 5%; Hamilton, Wellington and Dunedin had a small increase, while only Christchurch showed a decrease slightly when compared to the same period in the previous year. It is noted that the sites representing Hamilton and Christchurch are not within the city boundary. More suitable sites have now been installed and once 13 months of data is available we will provide data for use within this report.

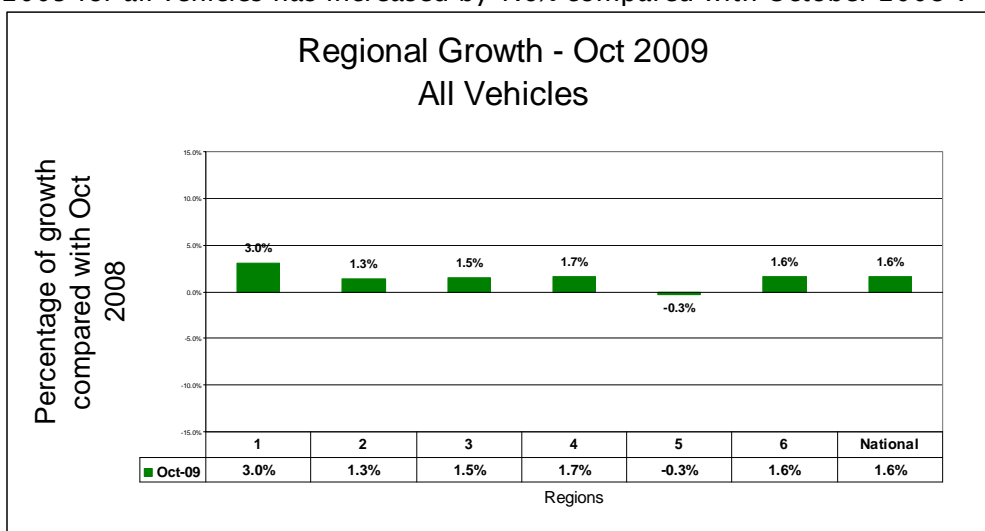
---

## Results: All Vehicles

### Regions

Comparisons across the NZ Transport Agency regions have also been carried out.

The graph below shows the percentage of difference compared with the same period in 2008. The MADT values here represent all vehicle types. It can be observed that most regions have had a small increase<sup>1</sup> in MADT, only region 5 which has had a minor decrease. Nationally, the MADT in October 2009 for all vehicles has increased by 1.6% compared with October 2008<sup>2</sup>.



NZTA Region Number	NZTA Region
1	Northland and Auckland
2	Waikato and Bay of Plenty
3	Taranaki, Manawatu-Wanganui, Hawkes Bay and Gisborne
4	Wellington, Nelson, Marlborough and Tasman
5	Canterbury and West Coast
6	Otago and Southland

### More graphs

The graphs (same as above) dated back to January 2007 are attached to this report.

### All sites

A table of MADT (all vehicles) values for all national telemetry sites is attached to this report.

<sup>1</sup> Regional MADT Growth - Weighted average of all the National telemetry sites in the specific region.

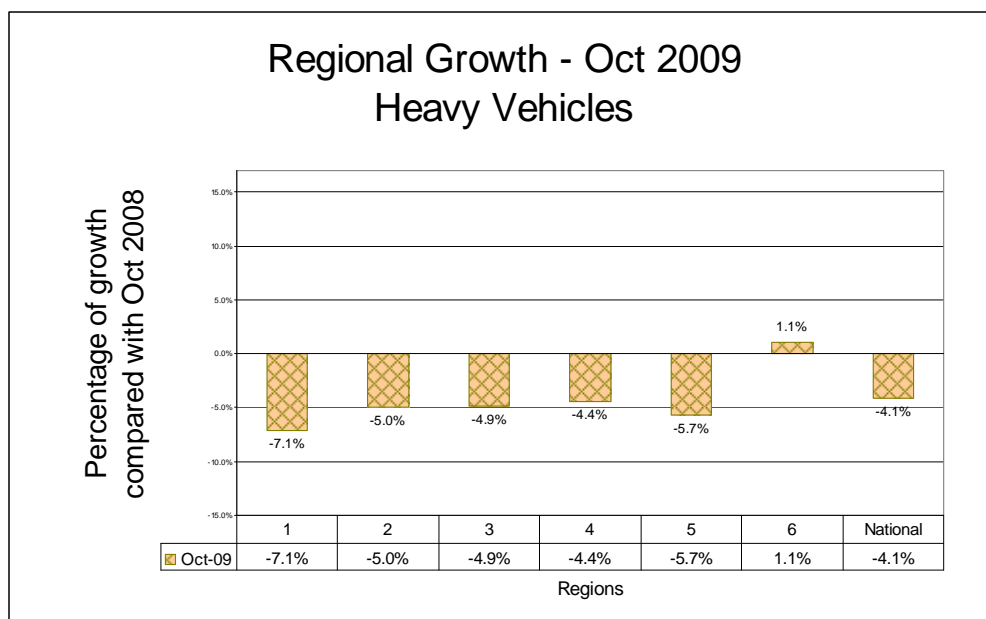
<sup>2</sup> National MADT Growth - Average of all the National telemetry sites.

# Results: Heavy Vehicles

## Regions

Comparisons across the NZ Transport Agency regions have also been carried out, focusing on heavy vehicles<sup>1</sup>.

The graph below shows the percentage of difference compared with the same period in 2008. The MADT values here represent heavy vehicles only. It can be observed that MADT for heavy vehicles has decreased in most regions, except region 6 which has had a small increase of 1.1%<sup>2</sup>. Nationally, the MADT in October 2009 for heavy vehicles dropped 4.1% compared with October 2008<sup>3</sup>.



NZTA Region Number	NZTA Region
1	Northland and Auckland
2	Waikato and Bay of Plenty
3	Taranaki, Manawatu-Wanganui, Hawkes Bay and Gisborne
4	Wellington, Nelson, Marlborough and Tasman
5	Canterbury and West Coast
6	Otago and Southland

## More graphs

The graphs (same as above) dated back to January 2007 are attached to this report.

## All sites

A table of MADT (heavy vehicles) values for all national telemetry sites for 2009 is attached to this report.

<sup>1</sup> Heavy vehicles are those with a gross vehicle mass exceeding 3.5 tonnes.

<sup>2</sup> Regional MADT Growth - Weighted average of all the National telemetry sites in the specific region.

<sup>3</sup> National MADT Growth - Average of all the National telemetry sites.



---

## Appendices

---

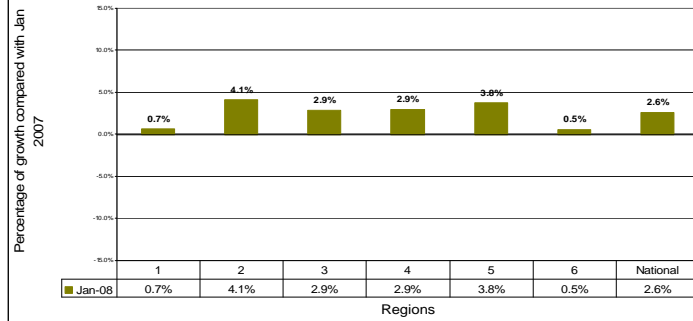
### Current and Previous Years Growth Graphs

- All Vehicles
- Heavy Vehicles

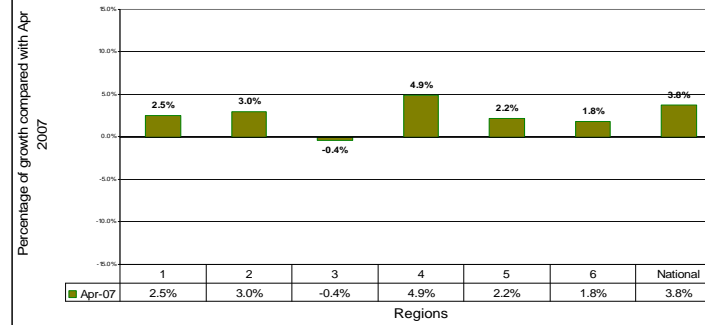
### Telemetry Site MADT's for 2009

- All Vehicles
- Heavy Vehicles

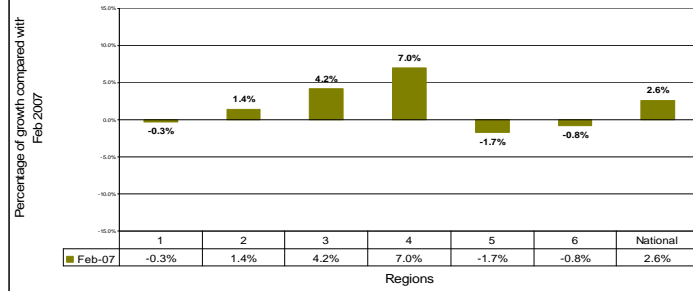
### Regional Growth - Jan 2007 All Vehicles



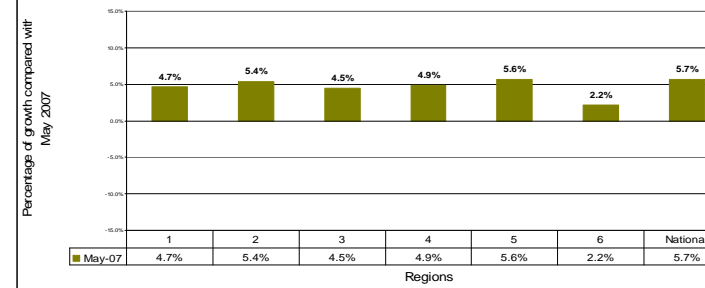
### Regional Growth - Apr 2007 All Vehicles



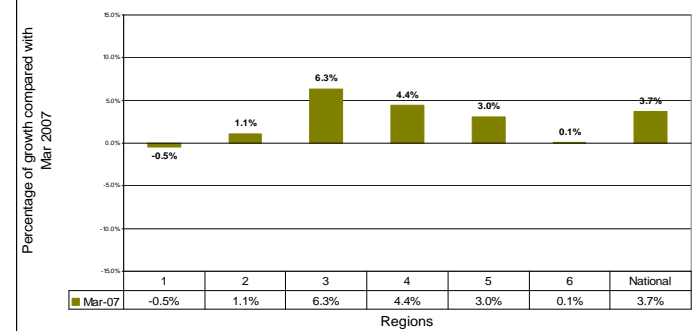
### Regional Growth - Feb 2007 All Vehicles



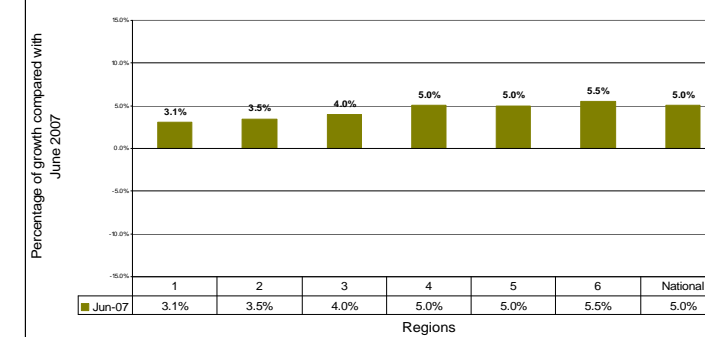
### Regional Growth - May 2007 All Vehicles



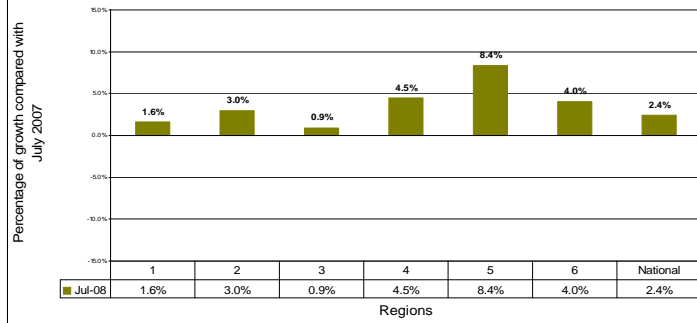
### Regional Growth - Mar 2007 All Vehicles



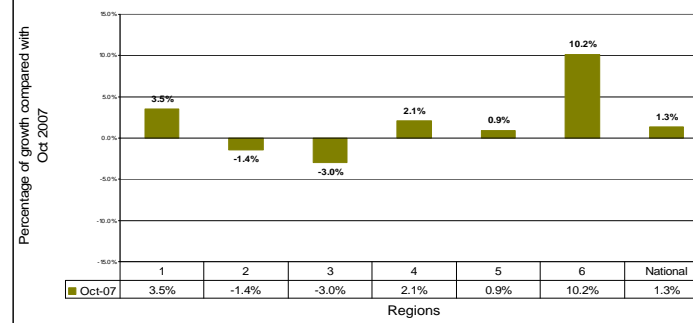
### Regional Growth - June 2007 All Vehicles



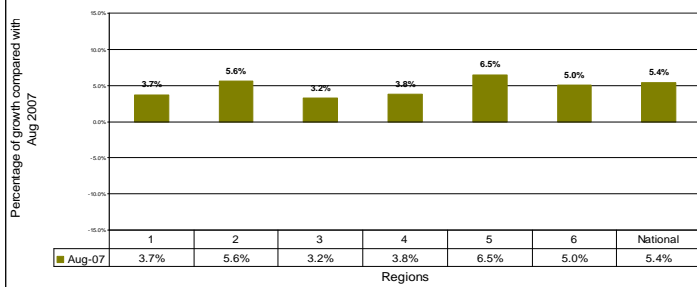
### Regional Growth - July 2007 All Vehicles



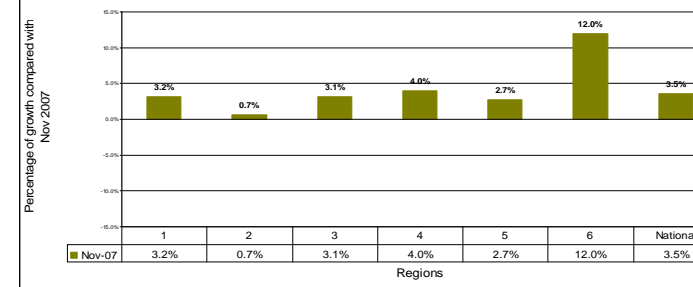
### Regional Growth - Oct 2007 All Vehicles



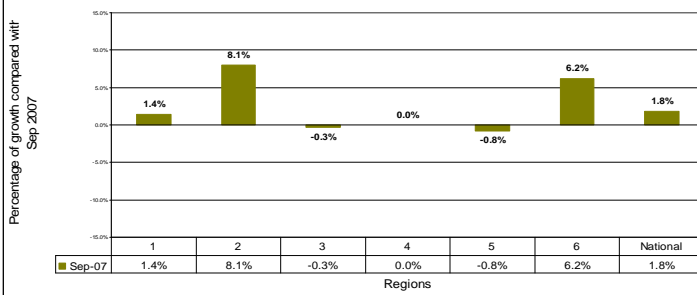
### Regional Growth - Aug 2007 All Vehicles



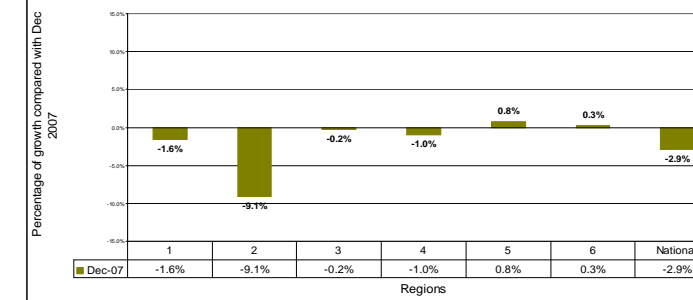
### Regional Growth - Nov 2007 All Vehicles



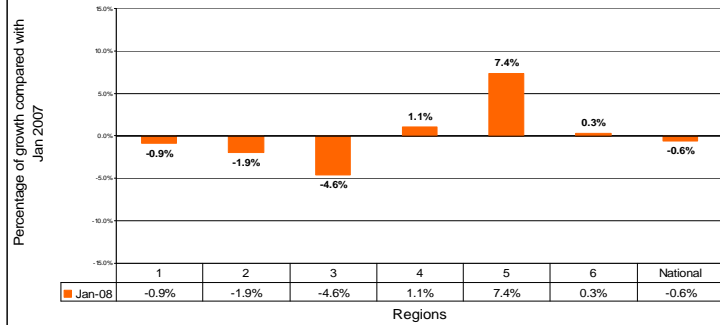
### Regional Growth - Sep 2007 All Vehicles



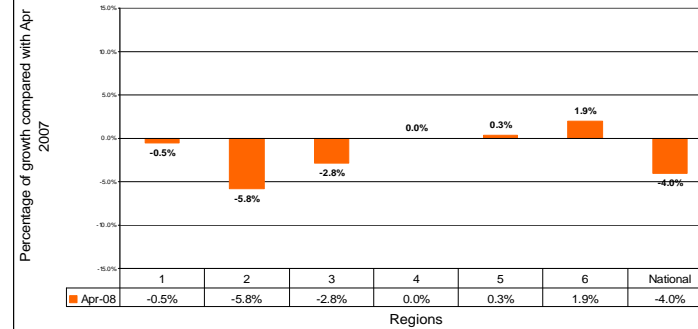
### Regional Growth - Dec 2007 All Vehicles



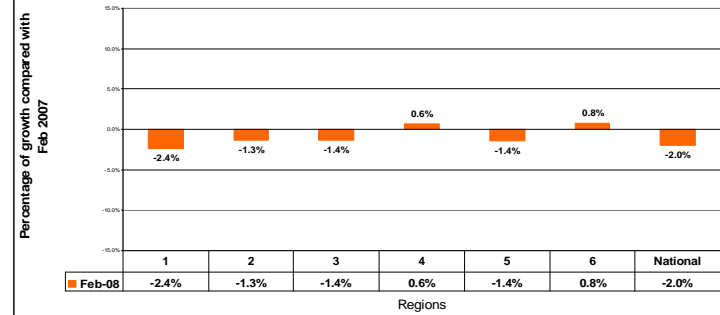
Regional Growth - Jan 2008  
All Vehicles



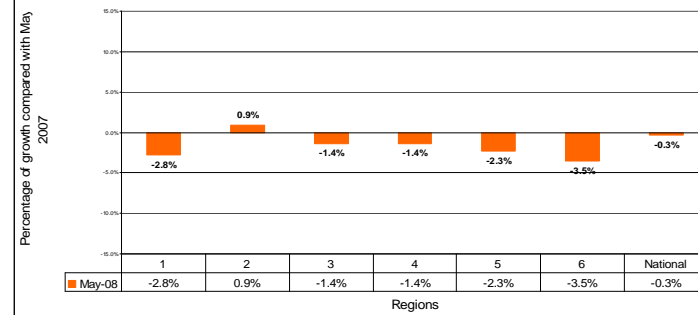
Regional Growth - Apr 2008  
All Vehicles



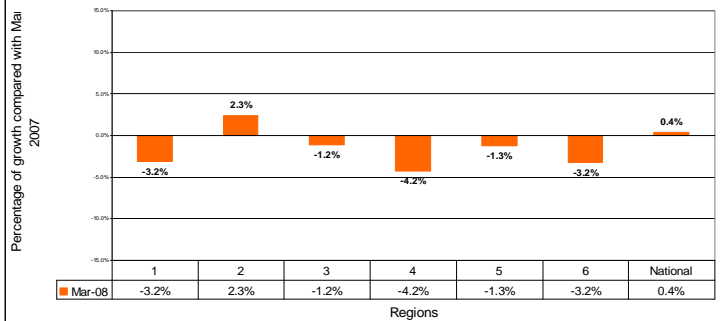
Regional Growth - Feb 2008  
All Vehicles



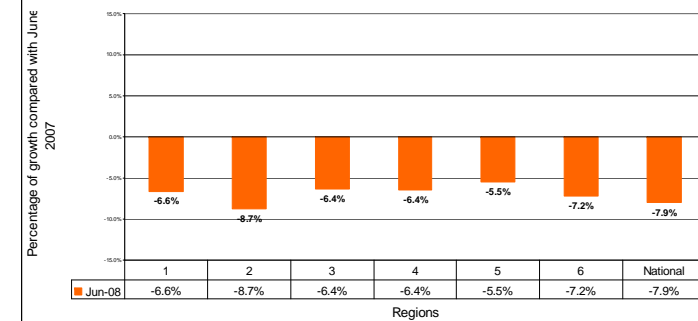
Regional Growth - May 2008  
All Vehicles



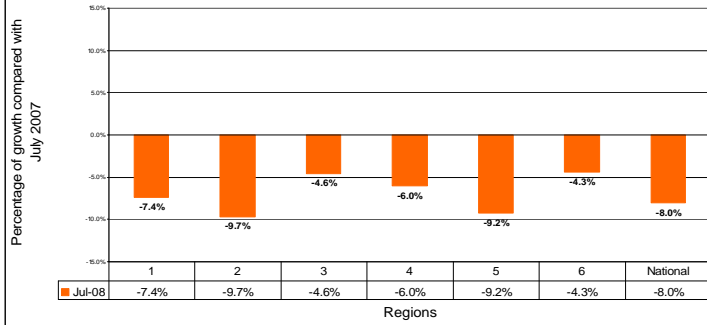
Regional Growth - Mar 2008  
All Vehicles



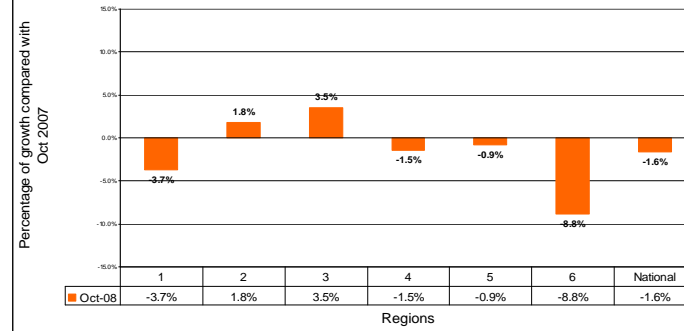
Regional Growth - June 2008  
All Vehicles



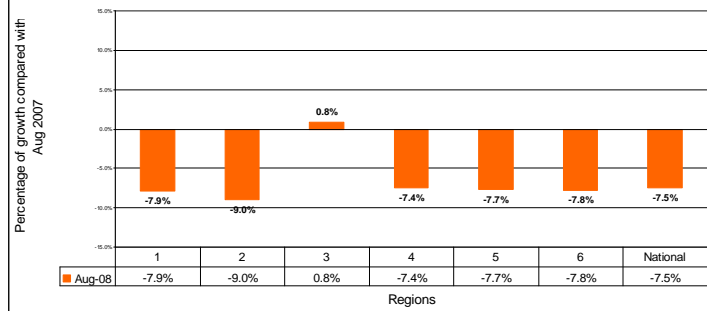
Regional Growth - July 2008  
All Vehicles



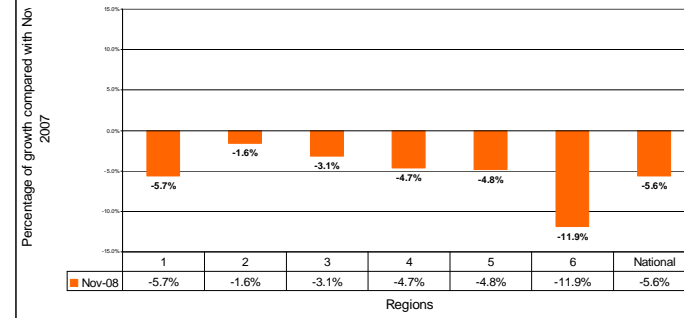
Regional Growth - Oct 2008  
All Vehicles



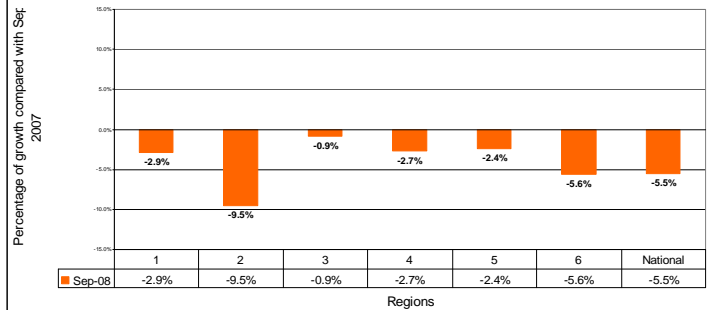
Regional Growth - Aug 2008  
All Vehicles



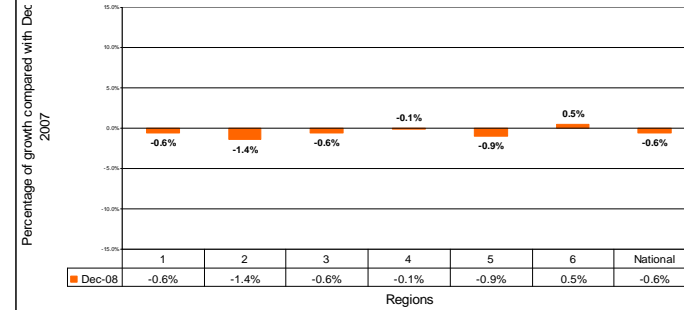
Regional Growth - Nov 2008  
All Vehicles



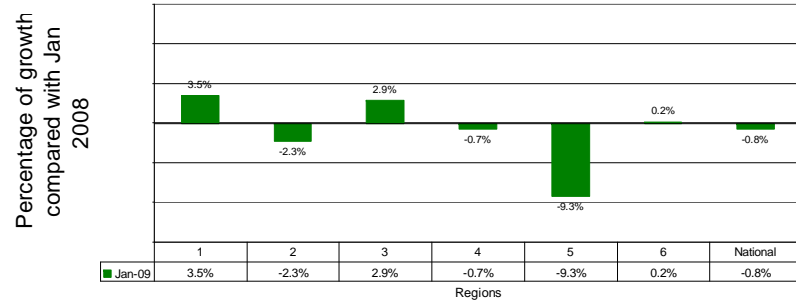
Regional Growth - Sep 2008  
All Vehicles



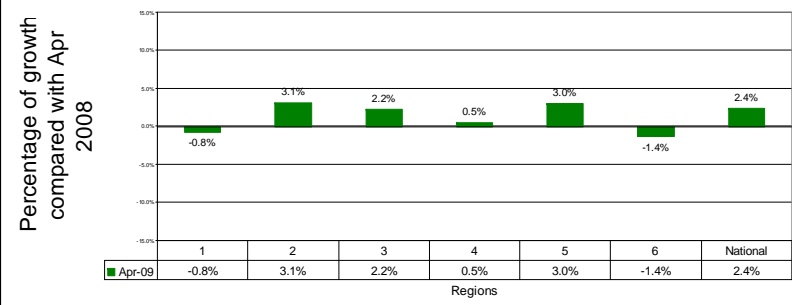
Regional Growth - Dec 2008  
All Vehicles



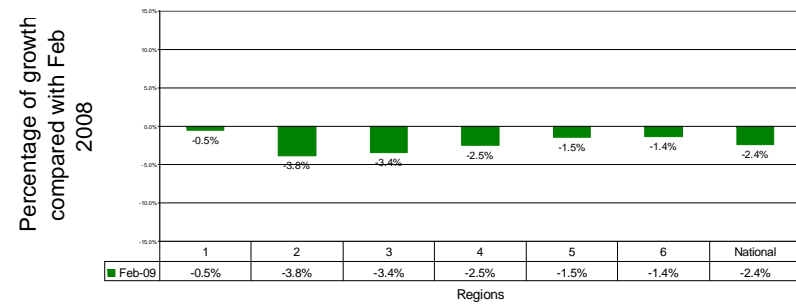
Regional Growth - Jan 2009  
All Vehicles



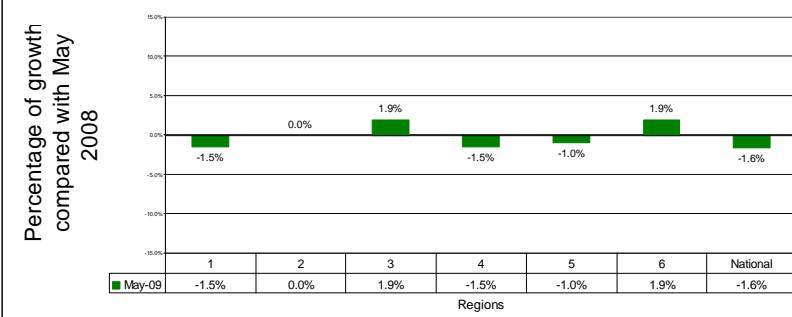
Regional Growth - Apr 2009  
All Vehicles



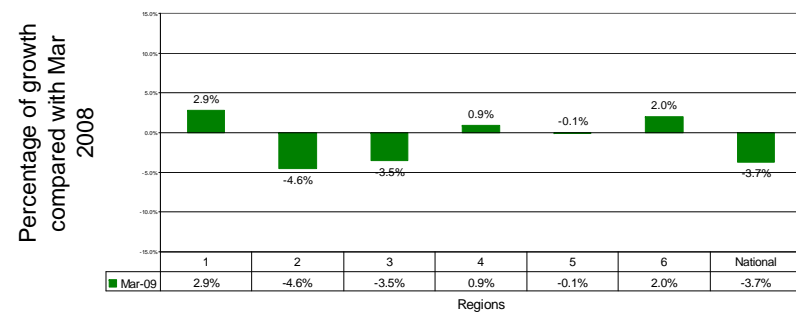
Regional Growth - Feb 2009  
All Vehicles



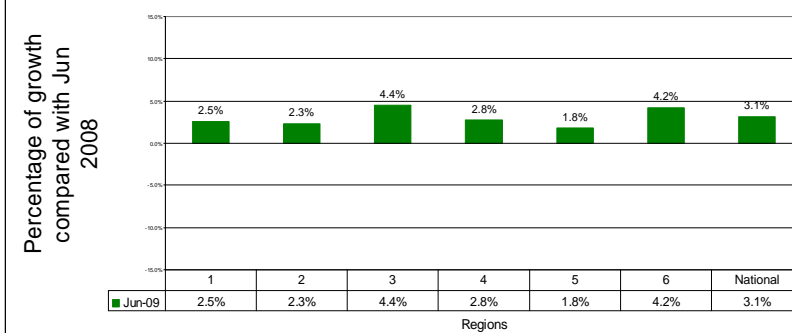
Regional Growth - May 2009  
All Vehicles



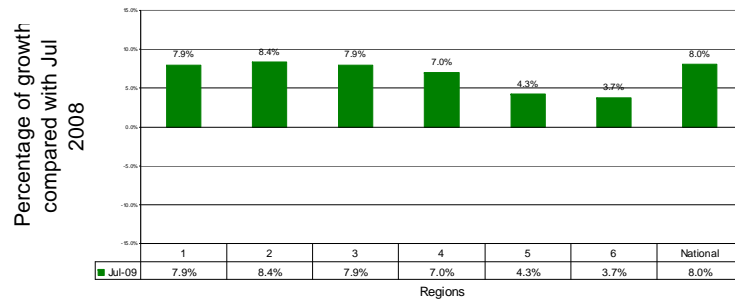
Regional Growth - Mar 2009  
All Vehicles



Regional Growth - Jun 2009  
All Vehicles



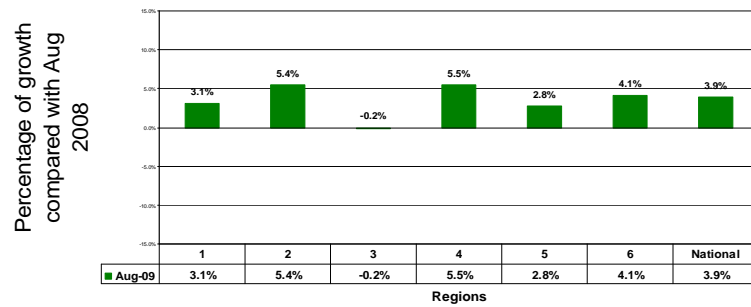
Regional Growth - Jul 2009  
All Vehicles



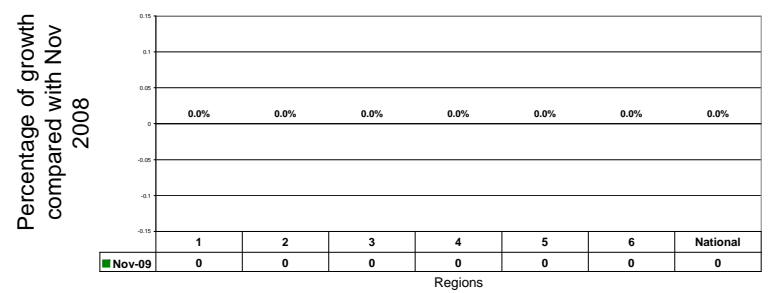
Regional Growth - Oct 2009  
All Vehicles



Regional Growth - Aug 2009  
All Vehicles



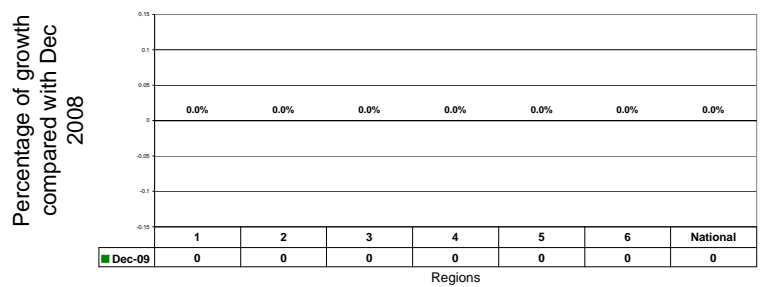
Regional Growth - Nov 2009  
All Vehicles

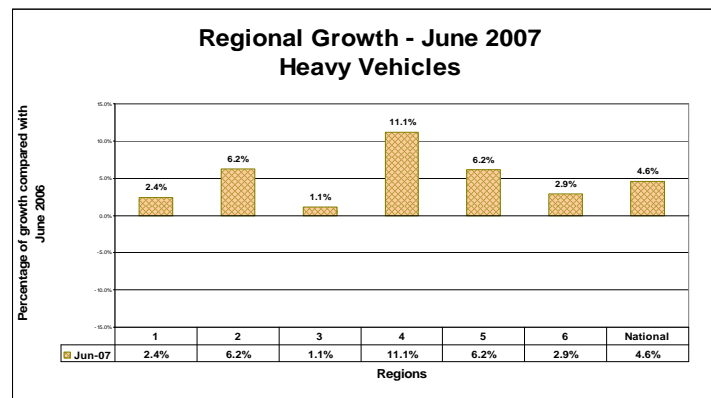
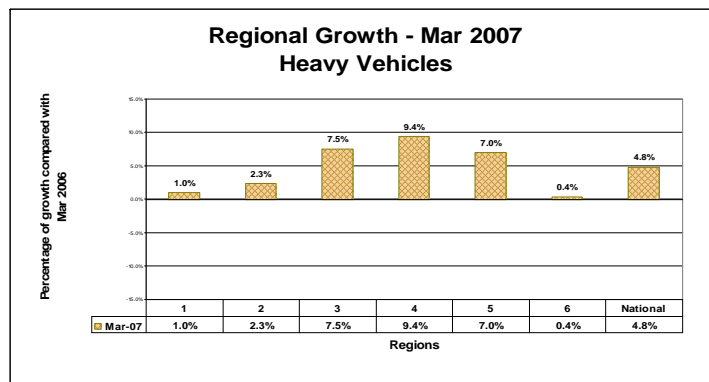
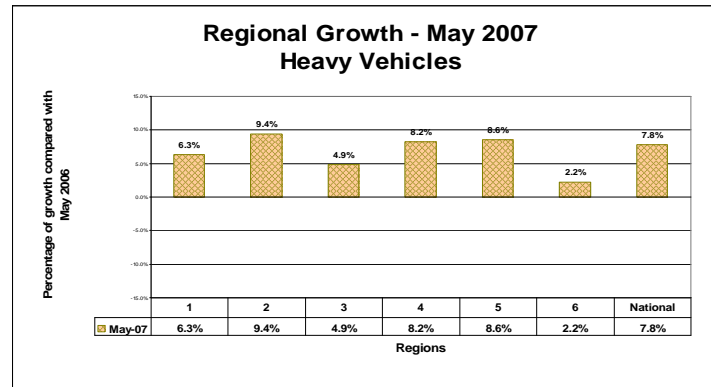
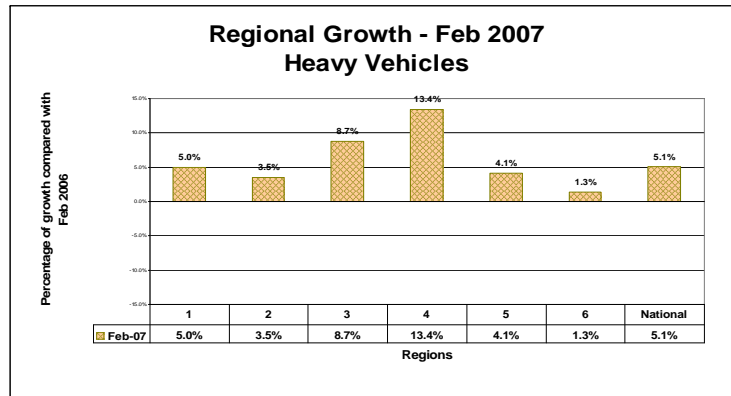
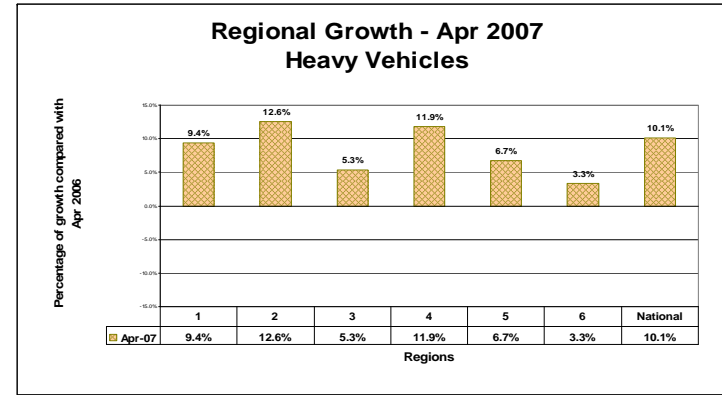
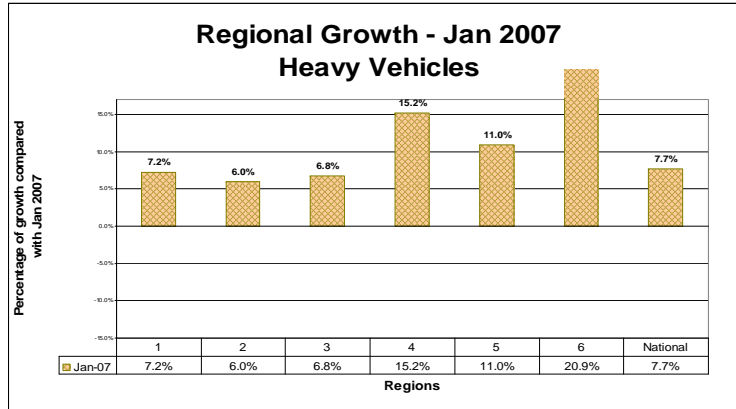


Regional Growth - Sep 2009  
All Vehicles



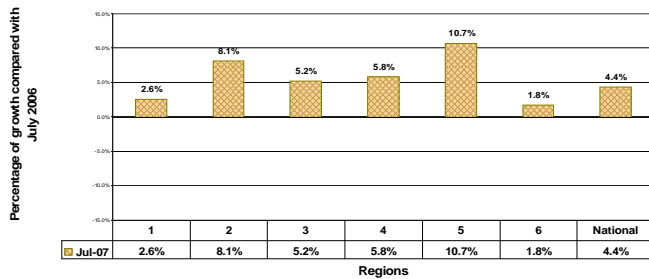
Regional Growth - Dec 2009  
All Vehicles



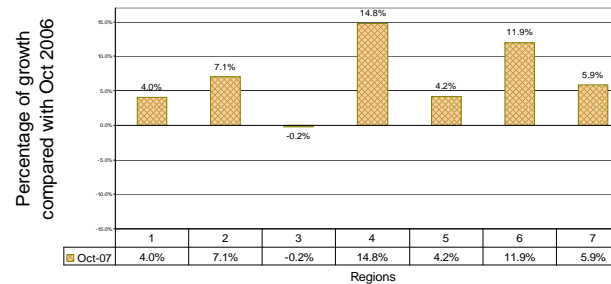




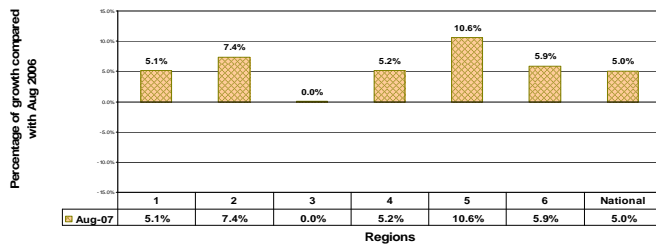
### Regional Growth - July 2007 Heavy Vehicles



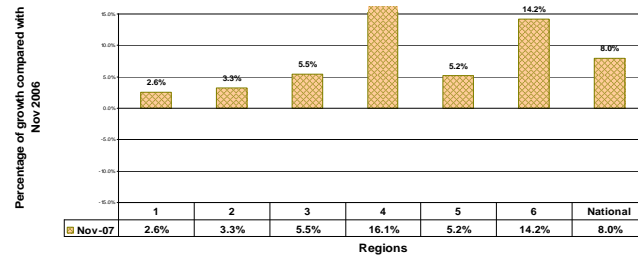
### Regional Growth - Oct 2007 Heavy Vehicles



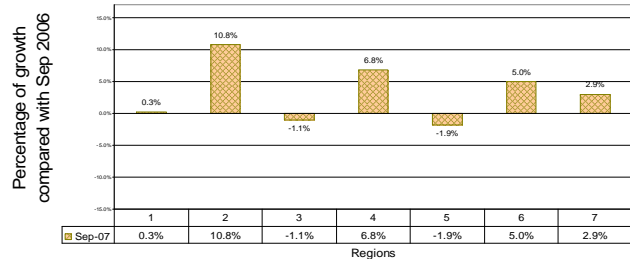
### Regional Growth - Aug 2007 Heavy Vehicles



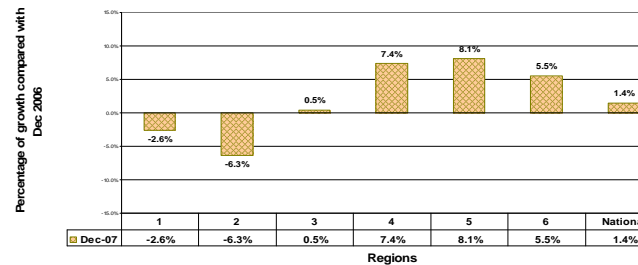
### Regional Growth - Nov 2007 Heavy Vehicles

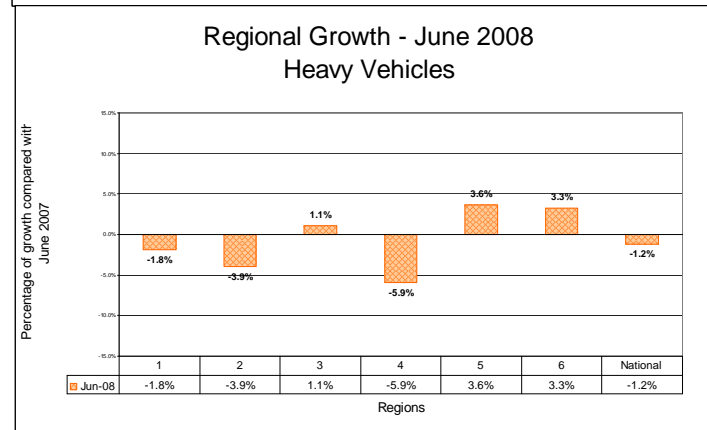
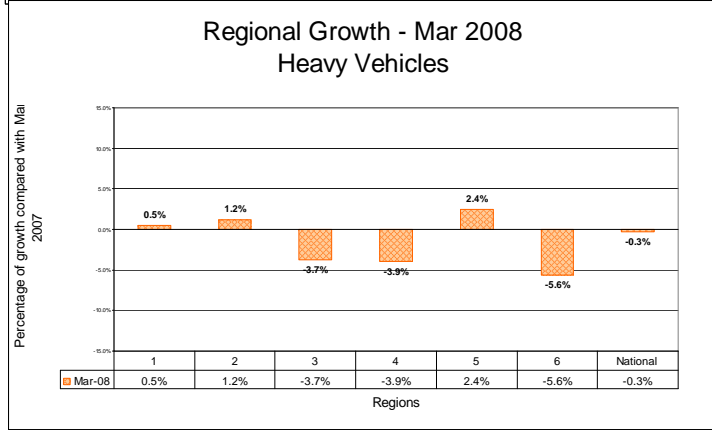
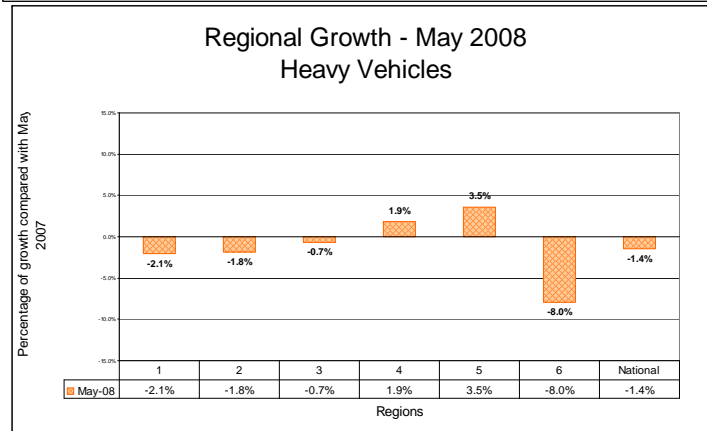
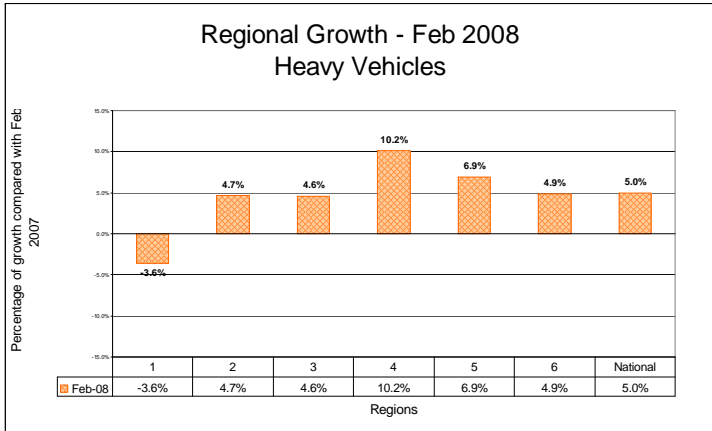
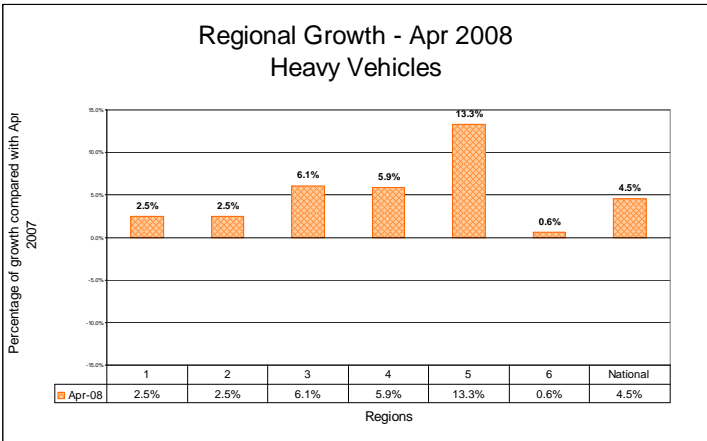
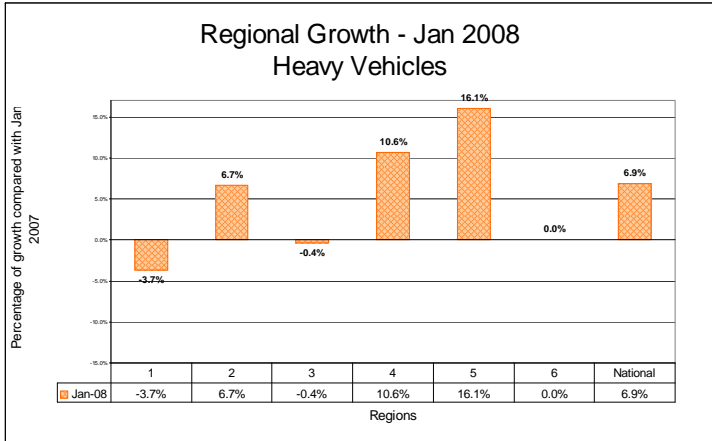


### Regional Growth - Sep 2007 Heavy Vehicles

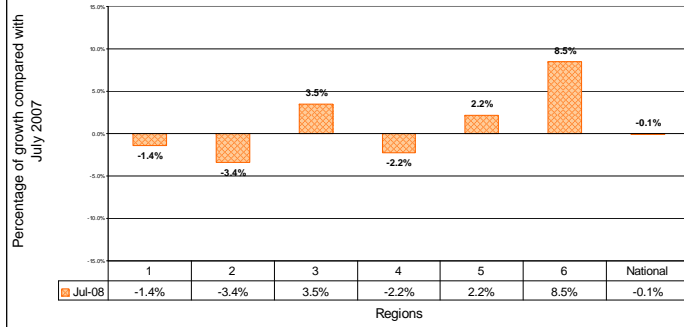


### Regional Growth - Dec 2007 Heavy Vehicles

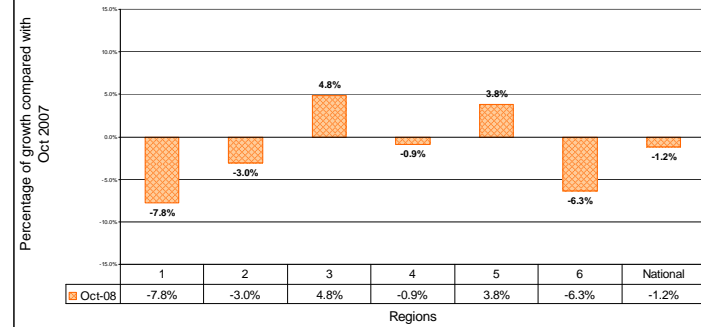




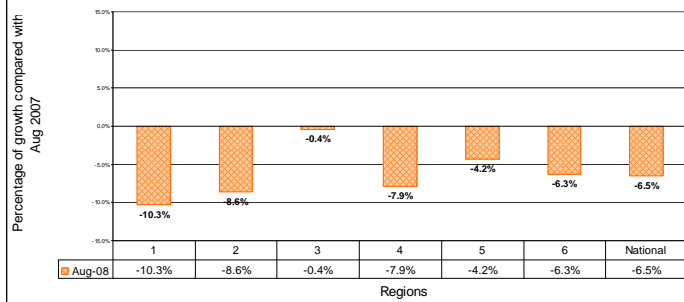
Regional Growth - July 2008  
Heavy Vehicles



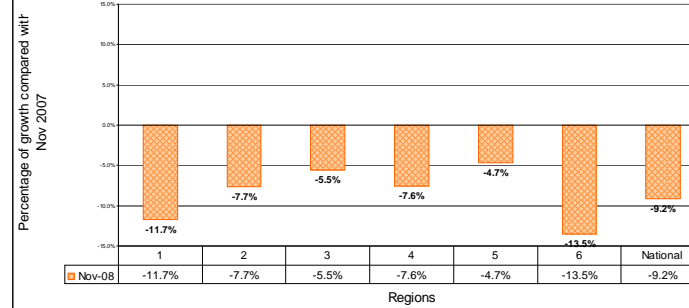
Regional Growth - Oct 2008  
Heavy Vehicles



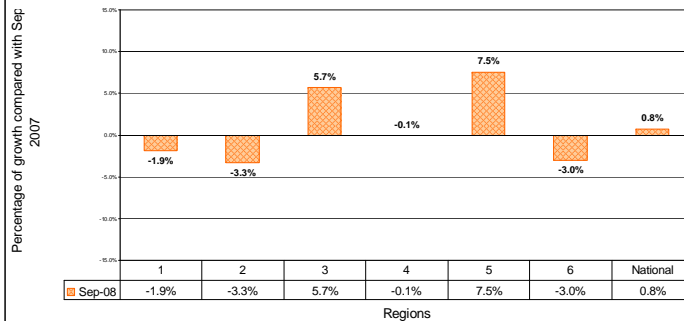
Regional Growth - Aug 2008  
Heavy Vehicles



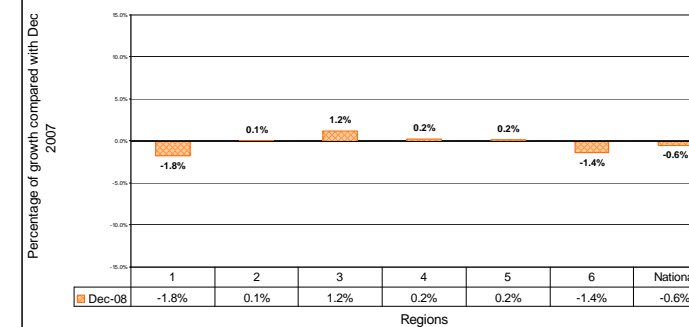
Regional Growth - Nov 2008  
Heavy Vehicles

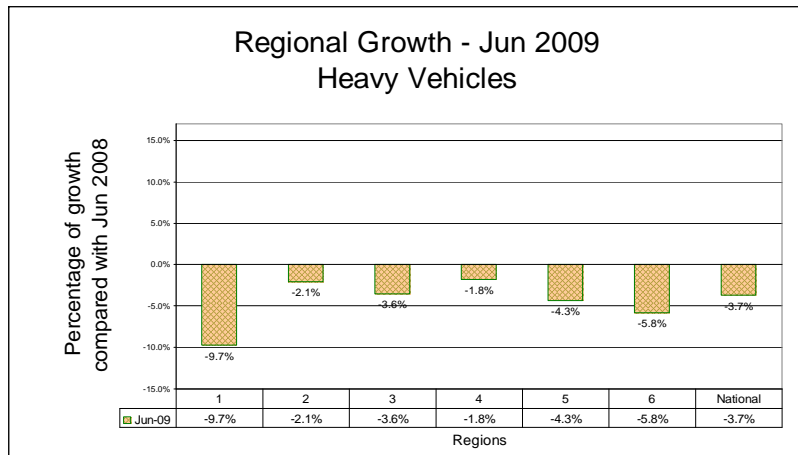
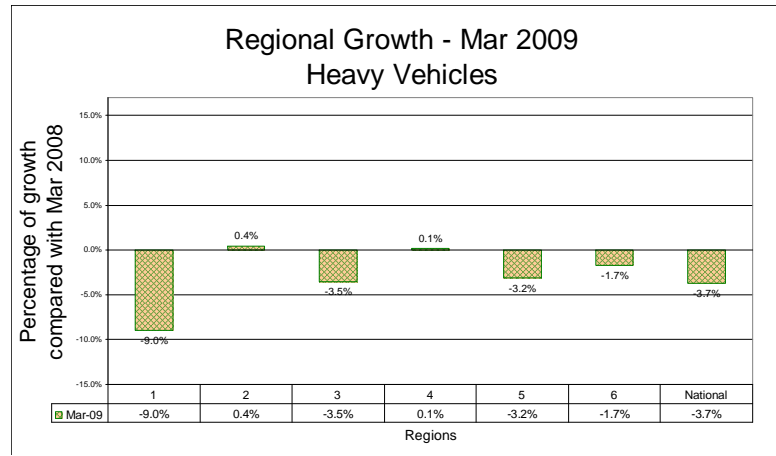
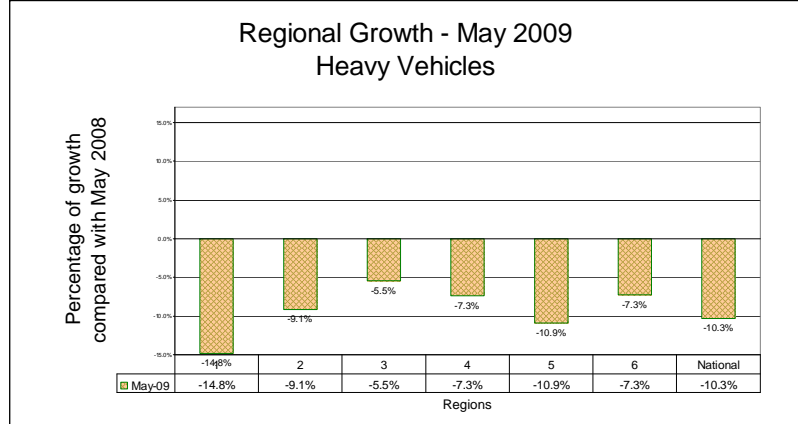
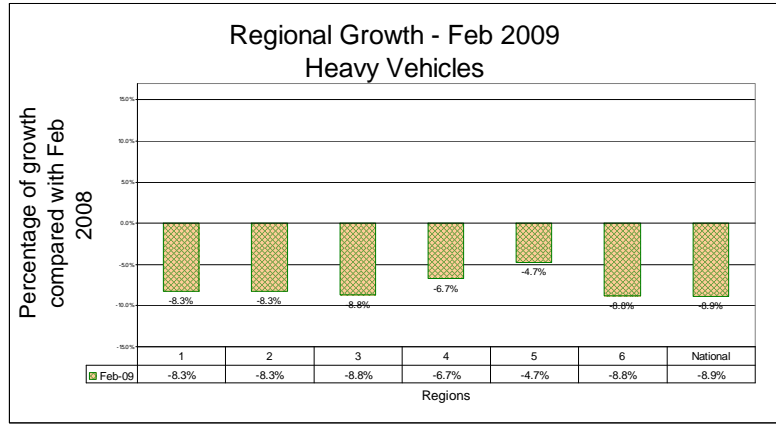
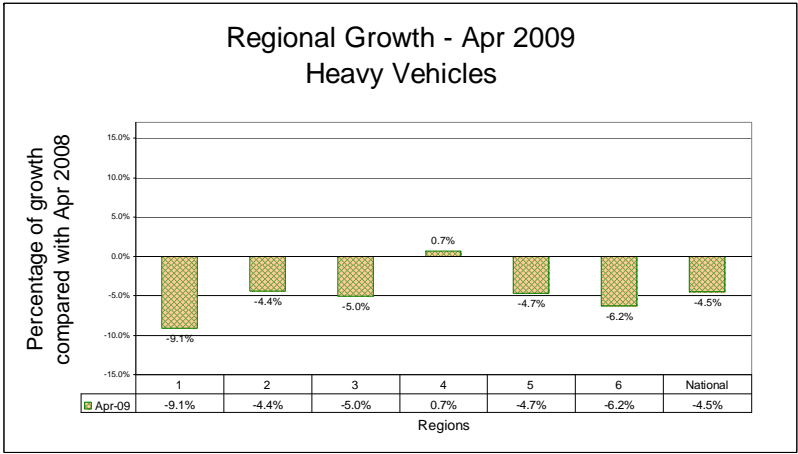
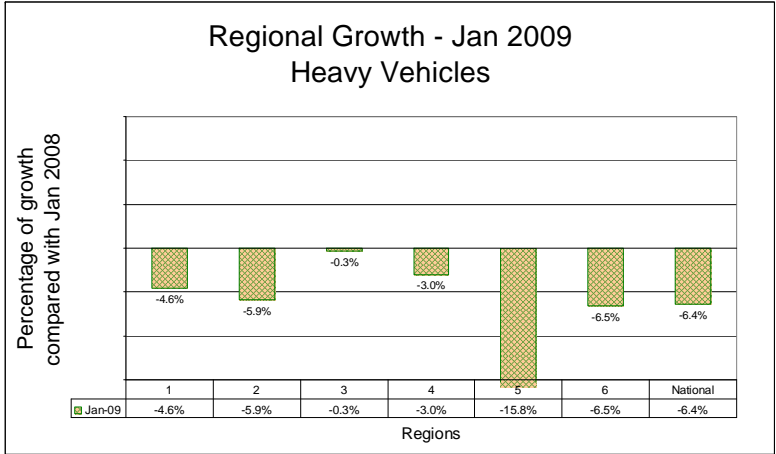


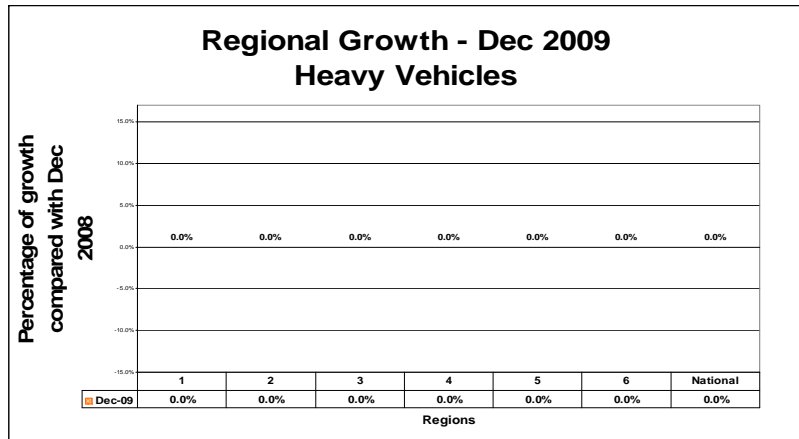
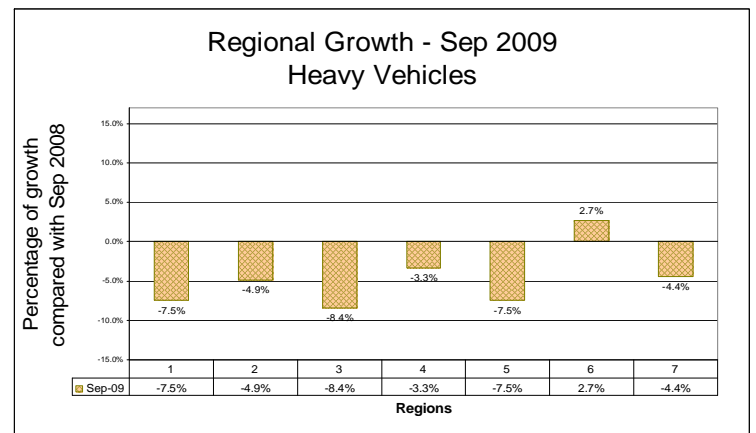
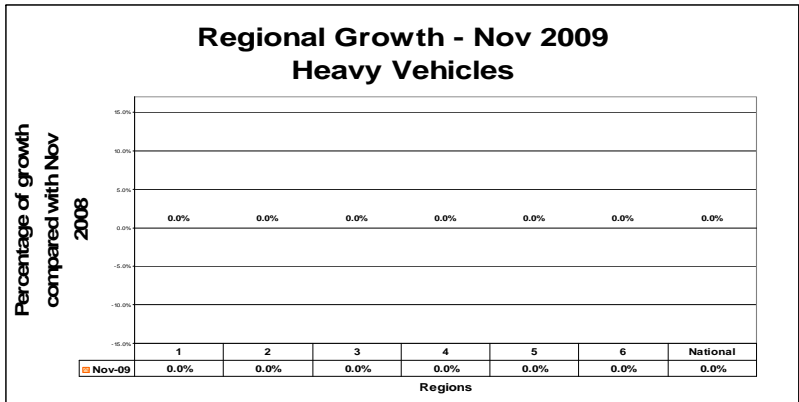
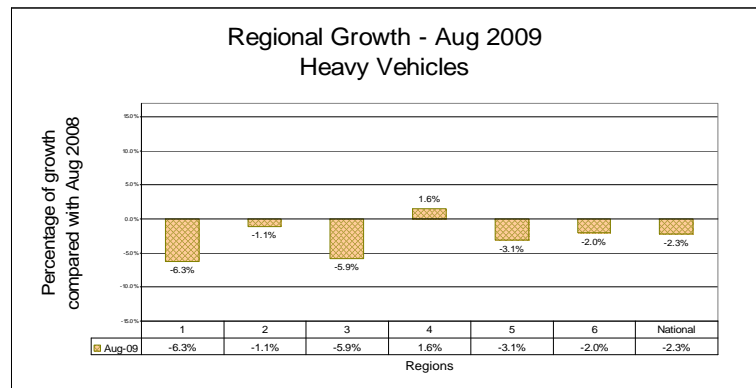
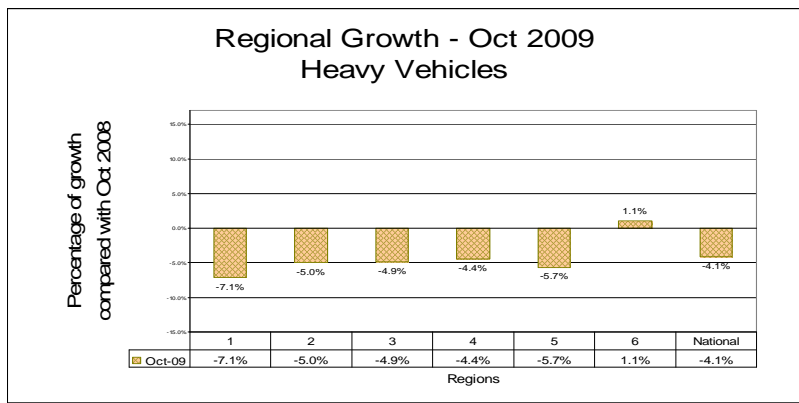
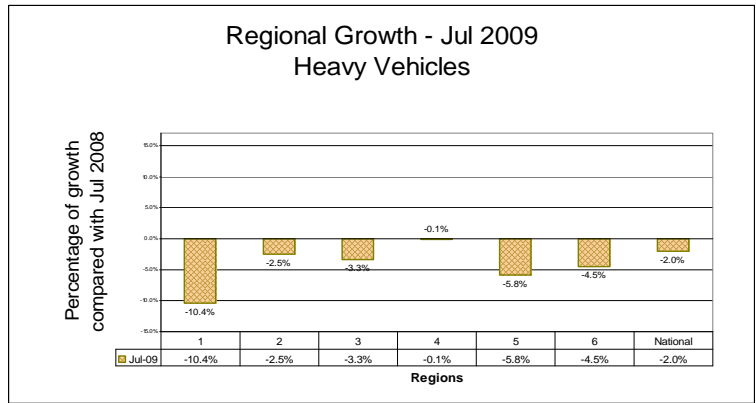
Regional Growth - Sep 2008  
Heavy Vehicles



Regional Growth - Dec 2008  
Heavy Vehicles







## Telemetry Site MADT All Vehicles

NZTA Region	Site Ref	Description	Oct-08	Nov-08	Dec-08	Jan-09	Feb-09	Mar-09	Apr-09	May-09	Jun-09	Jul-09	Aug-09	Sep-09	Oct-09
1	ID:01N00212	KAWAKAWA	6039	5912	6891	7464	6603	6302	6472	5480	5205	5419	5241	5365	6123
1	ID:01000029	Sth of Takou Bay Rd	3431	3416	3744	5381	4080	3729	4037			3027	3045	3235	
1	ID:01N00274	Nth of Maungakaramea Rd	13620	13535				14461	14893			13055	12650		
1	ID:01200220	East of Brynderwyn Brq 161	2651	2727	2830		3062		2962						2665
1	ID:01N00130	Nth of Ramseys Brq		1044					1232				916	1032	1068
1	ID:01N00265	Sth of Selwyn Avenue					22219	22761				20620			
1	ID:01700006	HATFIELDS BEACH	17552	17767	20581	19605	6876	6279	6076	5504	5058	5296	5227	5250	5819
1	ID:01N10459	DRURY - SB	27904	28199	30297	28681	29162	29117	28896	27503	26292	27896	27036	27417	
1	ID:01N20459	DRURY - NB	28175	28249	29186	30036	29336	29520	29247	27508	27008	28085	27273	27320	
1	ID:01N00339	WELLSFORD	8917	8660	10436	11660							7663	7655	9084
1	ID:01N10440	PANAMA Rd - SB	61182	62566	61517	57398	61880	63111	60607	60129	58263	60209	59576	62168	60956
1	ID:01N20440	PANAMA RD - NB	58470	59782	57983	56151	58456	59312	57379	56825	55650	57546	57434	59628	58768
1	ID:01N10474	BOMBAY - SB	17377	17068	19788	19226	18252	17926	18572	16532	15594	16786	16016	16437	17991
1	ID:01N20474	BOMBAY - NB	17283	16986	18224	20285	18148	18245	18615	16171	16022	16705	16067	16165	17824
1	ID:01N00424	Auckland Harbour Brq - Centre Span	79165	82306	80475	73761	77309	78775	81280	84221	76340	83792	82350	83580	83103
1	ID:01N10424	Auckland Harbour Brq - Left Clip-on	41386	42359	41939	38414	42550	43523	41312	38693	38479	39197	36782	38389	38020
1	ID:01N20424	Auckland Harbour Brq - Right Clip-on	34269	35631	29794	30641	38432	38935	36379	35896	38224	36471	38506	40429	40738
2	ID:00200002	MAUNGATAWHIRI	12703	11926	14799	16390	13621	13118	13693	11943	10976	11883	11138	11418	13193
2	ID:25A00011	NEEVESVILLE	3317	3060	4462	5925	3748	3346	3584	2598	2275	2503	2484	2567	3346
2	ID:02700011	KAIHIERE	4052	3734	4307	4349	4219	4216	4640	3838	3645	3991	3760	3832	4215
2	ID:01N00526	TAUPIRI	20592	20730	21629	20987	20924	21447	21618	19794	19493	20987		19780	20927
2	ID:01N00620	LICHFIELD			9490	9475	9209	9202	9421	8384	8185	8663	8271	8689	
2	ID:00300085	TE KUITI	5128	3808	4342	4324	3941	4061	4342	3691	3796	4372	4063	4047	4276
2	ID:03200074	West of Taupo	750	769	856	956	875	779	879	646	628	752	711	739	787
2	ID:01N00580	KARAPIRO	14731	14832	15751	15971	15333	15230	15465	13839	12699	13687	13234	13898	14869
2	ID:00200091	WAIHI	7361	7201	9252	9800	8025	7734	7876	6833	6507	6788	6509	6887	7608
2	ID:01N00729	HALLETTS BAY	5485	5127	6265	7050	5966	5363	5954	6096	4389	5530	4969	5005	5276
2	ID:00200141	TE PUNA	15434	15978	17171	16941	16374	16278	16239	15699	14666	15025	14810	14938	15733
2	ID:03010149	TE NGA	17259		17823	17317	17704	17655	17209	16801	16464	16332	16606	16608	17083
2	ID:03020149	East end of Puarenga Brq (Dec)	17222		17064	17418	17693	17539	17027	16693	16516	16369	16566	16565	17079
2	ID:00200204	OHINEPANEA	4787	4577	5297	5562	4899	4708	5035	4548	4260	4368	4302	4398	4895
2	ID:03000188	LAKE ROTOMA	2861	2729	3257	3615	3075	2887	3023	2702	2579	2670	2569	2706	2937
2	ID:03300030	Sth of Maungaranqi Rd Paengaroa	3909	3960	4407	4976	4392	4137	4332	4488	4204	4342	5096	5156	4619
2	ID:00500034	TARUKENGA	5196	5003	5554	5837	5460	5133	5677	4834	4686	4964	4710	4928	5375
2	ID:02900034	KAIMAI	9089	9049	10186	10167	9402	9361	9469	8611	8352	8501	8421	8649	9421
2	ID:00500057	WAIPA	7176	7110	7673	8134	7851	7464	7794	8429	6414	6970	6575	6685	7187
3	ID:00200428	ORMOND	2431	2326	2780	3278	2569	2509	2467	2220	2171	2151	2134	2138	2398
3	ID:00200627	TANGOIO	2087	2029	2348	2539	2234	2162	2309	1914	1818	1825	1784	1797	2039
3	ID:00500230	TE POHUE	2862	2684	3167	3506	3261	3136	3214	2457	2169	2558	2368	2463	
3	ID:05000010	Nth of Tutaekuri River	20518	20847	21094	19958	21252	22081	21536	20837	20017	20367	19941	20571	20539
3	ID:00300171	TONGAPORUTU Brq	2157	1999	2406	2606	2240	2312	2514	1807	1817	1912	1739	1831	2193
3	ID:00300267	TARIKI	8402	9013	8947	8121	6690	6976	8914				8187	8188	8687
3	ID:00300370	WAITOTARA	3421	3457	3666	3581	3552	3566	3594	3138	3076	3267	3097	3168	3509
3	ID:04500101	OHAWA BEACH Rd	4600	4879	4813	4612	4606	4485	4432		4003	4032	4055	4212	4360
3	ID:01N00930	SANSON	11946	11759	12760	12776	12666	12324	12789	11313	11005		11393	11339	12338

## Telemetry Site MADT All Vehicles

NZTA Region	Site Ref	Description	Oct-08	Nov-08	Dec-08	Jan-09	Feb-09	Mar-09	Apr-09	May-09	Jun-09	Jul-09	Aug-09	Sep-09	Oct-09
3	ID:01N00988	OHAU	15057	14789	16202	16317	15761	15318	13220	14122	13477	14381	14025	14164	15278
3	ID:00200755	NORSEWOOD	3984	3959	4515	4803	4492	4341	4370	3644	3316	3520	3376	3519	4111
3	ID:00300489	MANAWATU GORGE	6650	5999	7363	7468	7164	7153	7184	6465	6088	6336	6155	6194	6756
3	ID:00400133	HOROPITO	2092	1745	1945	2112	1916	1776	1927	1505	1857	2403	2336	2168	2202
3	ID:00400226	UPOKONGARO	1881	1968	2125	2060		1962	2085		1753	1902	1820	1805	2061
3	ID:01N00827	HIHITAHU	4641	4843	5211	5945	5172	4582	5226	3891	3791	4505	4125		
4	ID:01N11068	NGAURANGA - SB	22170	22502	21638	20438	22933	22863	22103	22141	21890	22444	22582	22148	22729
4	ID:00200895	CLAREVILLE	10236	10680	11010	10514	10787	10798	10633	9983	9841	9931	10175	10077	10284
4	ID:00200937	RIMUTAKA	5288	5541	6021	6364	6102	5965	6118	4938	4676	4980	5044	5051	5423
4	ID:01N01036	PUKERUA BAY	22925	22722	24285	23718	24055	23653	23974	22362	21667	22750	22439	22341	23670
4	ID:01N21068	NGAURANGA - NB	21866	22287	21579	19852	22820	22946	22085	22414	21932	22320	22522		
4	ID:05800009	Pauatahanui East	13674	14133	14488	13432	14232	14563	14041	13447	13331	13461	13701	13451	13434
4	ID:00210979	NGAURANGA SH2 - SB	21454	21738	20802	19058	21934	21937	20661	21095	20669	21497	21130	21334	21735
4	ID:00220979	NGAURANGA SH2 - NB	21224	21465	20489	18741	21648	21925	21107	21480	20910	21465	21370		
4	ID:00600122	STOKE	20042	20282	21755	21579	21450	20881	20322	19974	19547	19694	19690	20062	20761
4	ID:00600232	MURCHISON	1714	1775	2264	2736	2308	2026	2027	1515		1292	1283		1737
4	ID:00600100	HIRA	3118	3295	3638	4031	3821	3527	3356	2947	2736	2769	2787	2884	3169
4	ID:06000040	Riwaka	3471	3868	5468	6737	5187	4319	4417	3137	2633	2555	2669	2804	3345
4	ID:01S00037	Blenheim	3719	3900	4321	4657	4478	4150	4449	3349	3292	3510	3284	3241	3590
5	ID:01S00389	DUNSANDEL	10292	10107	10686	10636	10636	10473	10488	9150	8794	9592	9127	9363	10232
5	ID:01S00505	EVANS St Timaru	20888	21090	22330	21221	21155	20900	20966	19884	18936	19519	19000	19374	20447
5	ID:07300064	Springfield	1644	1617	1800	2005	2303	1900	1872	1274	1207	1705	1605	1551	1689
5	ID:07400006	SEMI Obsolete - Cranford St	20780	21188	21073	19310	21396	21649							
5	ID:01S00144	KAIKOURA	2356	2568	3039	3519	3127	2662	2882	2049	1818	2002	1866	1993	2470
5	ID:01S00522	ST ANDREWS	5734	5804	6316	6098	6201	6024	6174	5421	4905	5384	5008	5202	5737
5	ID:00700108	LEWIS PASS	1192	1125	1471	1799	1416	1266	1382	944	824	954	869	973	1183
5	ID:07409005	QE II Drive East Of Main Nth Rd		19211	20067	17767	18993	19244		18131		17944	18255	19021	18943
5	ID:00600454	CHESTERFIELD	2815	2947	3062	3174	3256	3861	2867	2461	2276	2381	2330	2550	2844
5	ID:00700239	AHAURA	1235	1277	1296	1333	1392	1665	1319	1184	1115	1168	1107	1185	1253
5	ID:00600398	PUNAKAIKI	964	1018	1183	1372	1327	1452	1018	803	671	704	700	813	1020
6	ID:00800336	ALEXANDRA	2060	2013	2464	2756	2813	2267	2317	1855	1712	1796	1917	1952	2126
6	ID:01S10713	BURNSIDE - SB	15445	15906	15759	13984	15870	15803		15625	15051	15228	15223	15074	15551
6	ID:01S20713	BURNSIDE - NB	10537	10786	10681	9627	10823	10762	10308	10676	10459	10496	10350	10331	10623
6	ID:01S50713	BURNSIDE - NB On Ramp	2491	2546	2497	2262	2486	2502	2427	2462	2412	2457	2483	2468	2509
6	ID:01S60713	BURNSIDE - SB Off Ramp	3051	3113	3027	2723	3092	3092	2945	3024	2955	2978	3031	3076	3078
6	ID:01S40713	BURNSIDE - NB Off Ramp	3276	3389	3326	2973	3380	3419	3261	3850	3305	3260	3287	3231	3315
6	ID:01S40714	Burnside - NB Off Ramp	2179	2220	2140	1954	2192	2179	2092	2084	2065	2032	2108	2128	2158
6	ID:01S00765	MILTON	5978	6185	6633	6516	6850	6608		5734	5445	5578	5505	5821	
6	ID:01S00921	INVERCARGILL	11268	11822	11826	10560	12147	12294	11509	11903	11640	11525	11941	11655	11801
6	ID:00601147	WINTON	4572	4898	4948	4509	4882	4792	4656	4582	4346	4310	4236	4413	4675
6	ID:01S00854	GORE	3952	4099	4323	4083	4416	4137	4158	3814	3462	3580	3521	3577	3894

## Telemetry Site MADT Heavy Vehicles

NZTA Region	Site Ref	Description	Oct-08	Nov-08	Dec-08	Jan-09	Feb-09	Mar-09	Apr-09	May-09	Jun-09	Jul-09	Aug-09	Sep-09	Oct-09
1	ID:01N00212	KAWAKAWA	701	688	676	728	696	703	689	603	551	552	541	603	665
1	ID:01000029	Sth of Takou Bay Rd	274	289	296	382	304	289	322			219	228	261	
1	ID:01N00274	Nth of Maungakaramea Rd	1423	1479				1601	1503			1305	1314		
1	ID:01200220	East of Brynderwyn Brq 161	301	348	318		286		233						292
1	ID:01N00130	Nth of Ramseys Brq		160					149				131	165	161
1	ID:01N00265	Sth of Selwyn Avenue					994	1015				812			
1	ID:01700006	HATFIELDS BEACH	1338	1361	1467	1247	363	327	293	278	261	260	246		249
1	ID:01N10459	DRURY - SB	2424	2490	2447	2278	2486	2539	2394	2250	2184	2149	2083	2251	
1	ID:01N20459	DRURY - NB	2315	2386	2282	2229	2392	2427	2303	2164	2104	2061	1987	2117	
1	ID:01N00339	WELLSFORD	940	957	989	1064							778	837	927
1	ID:01N10474	BOMBAY - SB	1959	2001	1992	1834	2006	2017	1949	1806	1741	1718	1656	1777	1881
1	ID:01N20474	BOMBAY - NB	1940	1994	1885	1884	2001	2006	1925	1784	1742	1698	1645	1742	1838
2	ID:00200002	MAUNGATAWHIRI	1633	1616	1605	1593	1631	1696	1628	1542	1490	1480	1402	1501	1535
2	ID:25A00011	NEEVESVILLE	352	318	371	447	301	279	303	240	215	210	214	241	305
2	ID:02700011	KAIHERE	855	783	764	731	806	892	803	755	738	721	727	790	785
2	ID:01N00526	TAUPIRI	2240	2330	2145	1975	2151	2150	2058	1915	1897	1821		1953	2034
2	ID:01N00620	LICHFIELD	1565		1365	1289	1407	1497	1413	1270	1207	1204	1159	1349	
2	ID:00300085	TE KUITI	850	682	689	636	683	692	691	627	616	588	562	619	685
2	ID:03200074	West of Taupo	94	115	111	103	138	140	146	123	121	120	108	121	126
2	ID:01N00580	KARAPIRO	1890	1997	2127	1867	1992	1974	1569	1361	1257	1186	1271	1369	1505
2	ID:00200091	WAIHI	809	798	789	855	873	855	846	790	734	735	700	804	803
2	ID:01N00729	HALLETTS BAY	797	839	823	821	847	862	798	979	714	725	697	733	707
2	ID:00200141	TE PUNA	1128	1166	1099	1084	1155	1216	1213	1201	987	1024	1019	1123	1126
2	ID:03010149	TE NGA	887		890	907	970	1352	1213	872	890	817	924	962	990
2	ID:03020149	East end of Puarenqa Brq (Dec)	929		874	941	1056	1149	1036	920	913	839	974	1011	1023
2	ID:00200204	OHINEPANEA	774	745	695	693	711	702	791	705	625	693	726	727	751
2	ID:03000188	LAKE ROTOMA	348	307	324	345	351	346	324	304	291	278	311	348	346
2	ID:03300030	Sth of Maungarangi Rd Paengaroa	565	574	529	535	570	568	585	580	565	561	574	600	577
2	ID:00500034	TARUKENGA	568	591	574	585	617	587	574	518	490	486	461	540	579
2	ID:02900034	KAIMAI	1309	1286	1312	1199	1237	1245	1208	1093	1015	984	990	1054	1139
2	ID:00500057	WAIPA	798	807	714	742	813	825	813	928	739	769	745	775	806
3	ID:00200428	ORMOND	233	240	245	309	268	339	257	224	215	186	188	190	205
3	ID:00200627	TANGOIO	371	372	337	377	401	424	402	380	357	331	305	306	319
3	ID:00500230	TE POHUE	500	507	458	480	515	561	544	477	427	447	438	450	
3	ID:05000010	Nth of Tutaekuri River	1397	1353	1271	1231	1366	1486	1527	1437	1218	1200	1103	1215	1171
3	ID:00300171	TONGAPORUTU Brq	399	383	384	386	392	386	381	327	331	322	310	346	402
3	ID:00300267	TARIKI	951	989	896	834	775	811	997				743	863	967
3	ID:00300370	WAITOTARA	538	582	506	461	474	501	492	453	437	418	458	452	554
3	ID:04500101	OHAWA BEACH Rd	601	596	533	490	447	448	418		231	225	354	501	553
3	ID:01N00930	SANSON	1491	1560	1482	1401	1484	1475	1428	1311	1282		1270	1289	1423
3	ID:01N00988	OHAU	1535	1564	1496	1429	1515	1534	1233	1371	1337	1367	1329	1386	1444
3	ID:00200755	NORSEWOOD	618	681	628	698	691	685	640	545	498	481	464	520	571



## Telemetry Site MADT Heavy Vehicles

NZTA Region	Site Ref	Description	Oct-08	Nov-08	Dec-08	Jan-09	Feb-09	Mar-09	Apr-09	May-09	Jun-09	Jul-09	Aug-09	Sep-09	Oct-09
3	ID:00300489	MANAWATU GORGE	786	774	829	875	887	869	869	772	715	704	674	696	759
3	ID:00400133	HOROPITO	279	297	297	321	344	323	309	284	285	292	260	263	307
3	ID:00400226	UPOKONGARO	150	173	161	158		172	192		142	155	149	146	173
3	ID:01N00827	HIHITAH	908	1043	897	897	925	923	901	813	776	801	750		
4	ID:01N11068	NGAURANGA - SB	792	807	745	716	785	784	818	756	764	759	764	776	770
4	ID:00200895	CLAREVILLE	622	674	593	587	638	642	608	490	467	453	504	569	551
4	ID:00200937	RIMUTAKA	289	327	315	323	337	350	456	286	263	271	275	284	309
4	ID:01N01036	PUKERUA BAY	1606	1657	1528	1405	1556	1582	1520	1449	1448	1455	1411	1485	1570
4	ID:01N21068	NGAURANGA - NB	719	729	693	718	718	731	689	687	668	673	732		
4	ID:05800009	Pauatahanui East	429	454	449	420	442	470	445	388	400	404	408	411	385
4	ID:00210979	NGAURANGA SH2 - SB	754	738	676	640	719	726	685	697	694	717	707	721	727
4	ID:00220979	NGAURANGA SH2 - NB	721	706	655	619	692	697	659	680	668	689	675		
4	ID:00600122	STOKE	1274	1280	1194	1236	1308	1365	1302	1219	1129	1120	1097	1151	1216
4	ID:00600232	MURCHISON	276	287	312	379	334	314	282	229		189	212		263
4	ID:00600100	HIRA	463	473	449	489	505	510	483	396	411	416	430	458	436
4	ID:06000040	Riwaka	237	259	328	385	336	306	318	223	153	146	161	190	216
4	ID:01S00037	Blenheim	564	599	558	583	594	600	709	499	452	450	454	488	528
5	ID:01S00389	DUNSANDEL	1654	1587	1537	1507	1549	1479	1425	1229	1123	1145	1170	1331	1453
5	ID:01S00505	EVANS St Timaru	1613	1651	1538	1476	1612	1578	1459	1301	1181	1158	1212	1382	1503
5	ID:07300064	Springfield	211	206	206	217	282	229	220	158	142	145	175	178	222
5	ID:07400006	SEMI Obsolete - Cranford St	461	456	428	411	450	477							
5	ID:01S00144	KAIKOURA	468	500	490	508	522	493	495	424	393	393	380	415	455
5	ID:01S00522	ST ANDREWS	973	987	940	930	989	935	908	780	665	684	741	840	920
5	ID:00700108	LEWIS PASS	185	180	211	258	206	201	192	154	138	150	150	163	182
5	ID:07409005	QE II Drive East Of Main Nth Rd		569	600	538	563	578		491		493	480	552	551
5	ID:00600454	CHESTERFIELD	364	374	343	349	370	403	293	233	190	199	209	305	368
5	ID:00700239	AHAURA	201	215	175	186	200	240	184	174	155	156	147	180	193
5	ID:00600398	PUNAKAIKI	124	123	116	122	134	150	99	87	59	59	68	95	119
6	ID:00800336	ALEXANDRA	196	196	235	270	270	212	218	175	153	154	166	174	191
6	ID:01S10713	BURNSIDE - SB	873	893	852	800	628	745		576	723	722	727	772	811
6	ID:01S20713	BURNSIDE - NB	607	625	585	560	621	645	597	536		634	620	670	698
6	ID:01S50713	BURNSIDE - NB On Ramp	112	112	108	104	112	116	113	109	102	106	106	105	105
6	ID:01S60713	BURNSIDE - SB Off Ramp	199	196	187	180	197	202	190	196	187	187	191	194	197
6	ID:01S40713	BURNSIDE - NB Off Ramp	193	194	185	178	199	208	197	218	192	185	187	182	189
6	ID:01S40714	Burnside - NB Off Ramp	72	71	67	67	71	72	70	66	65	63	67	68	68
6	ID:01S00765	MILTON	823	803	857	804	908	888		714	579	559	578	696	
6	ID:01S00921	INVERCARGILL	410	443	454	412	464	460	419	411	415	412	388	409	407
6	ID:00601147	WINTON	500	521	501	470	509	495	467	401	344	349	372	453	498
6	ID:01S00854	GORE	490	502	502	457	539	528	489	433	368	365	400	450	507